

EDWARDS, CALIFORNIA

VOR/DME or TACAN Y RWY 23L

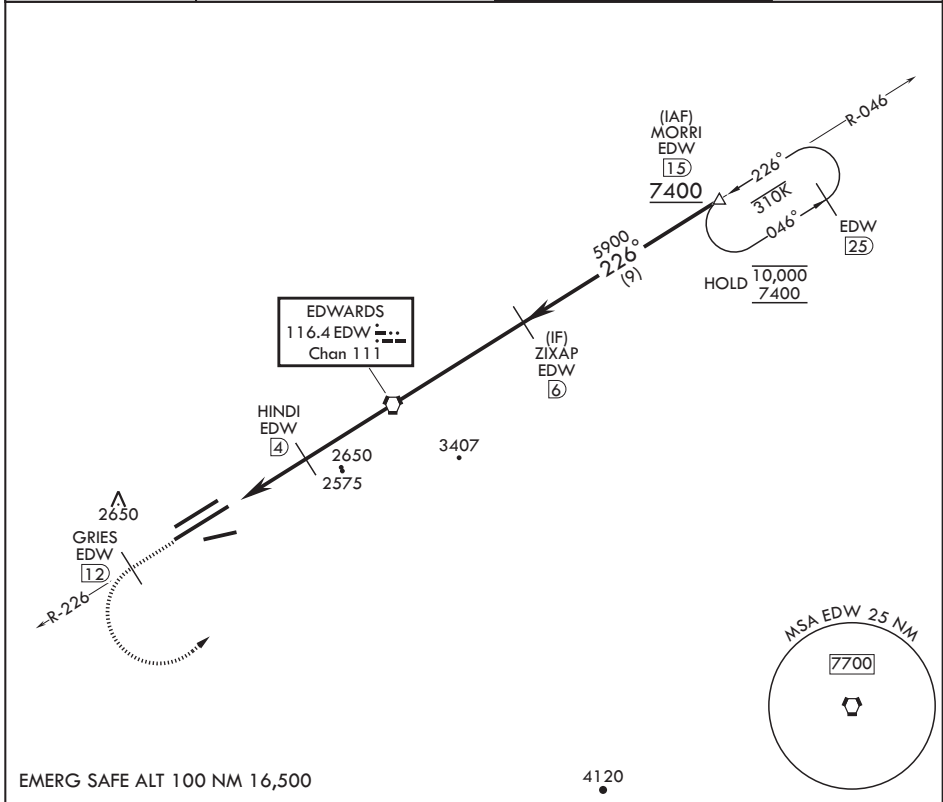
VORTAC EDW 116.4 Chan 111	APCH CRS 226°	Rwy ldg TDZE 15,017 2286	Arprt Elev 2310
--	-------------------------	--	---------------------------

(USAF)

EDWARDS AFB (KEDW)

⚠ * Circling not authorized NW of Rwy 5L-23R. Circling not authorized at night to Rwy 5L-23R. **MISSED APPROACH:** Climb to 7400. Track EDW VORTAC R-226 outbound to GRIES, then turn left direct MORRI and hold. Missed Approach requires use of RNAV or ATC RADAR monitoring.

ATIS ★ 127.425 269.9	JOSHUA APP CON/DEP CON 133.65 348.7	TOWER ★ 120.7 (CTAF) 318.1 (CTAF)	GND CON 121.8 225.4
--------------------------------	---	--	-------------------------------



7400 EDW R-226	GRIES EDW 12	MORRI EDW 15	MORRI 15	ELEV 2310	TDZE 2286
VGSI and descent angles not coincident (VGSI Angle 3.00/TCH 49).					
HUBNO 7		HINDI 4	VORTAC 4500	ZIXAP 6	MORRI 15 7400
3300		5900		226°	
.5		3 NM		4 NM	
CATEGORY	A	B	C	D	E
S-23L	2640-1		354	(400-1)	
CIRCLING*	2880-1	569 (600-1)	2880-1½ 569 (600-1½)	2880-2	569 (600-2)
			2516	HIRL Rwy 5R-23L REIL Rwy 23L	

EDWARDS, CALIFORNIA

34°54'N - 117°53'W

EDWARDS AFB (KEDW)

Amdt 2 23APR20

VOR/DME or TACAN Y RWY 23L

SW-3, 25 DEC 2025 to 22 JAN 2026

SW-3, 25 DEC 2025 to 22 JAN 2026