

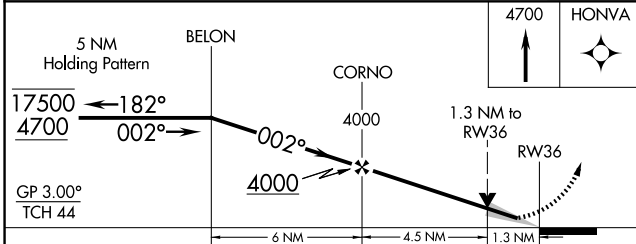
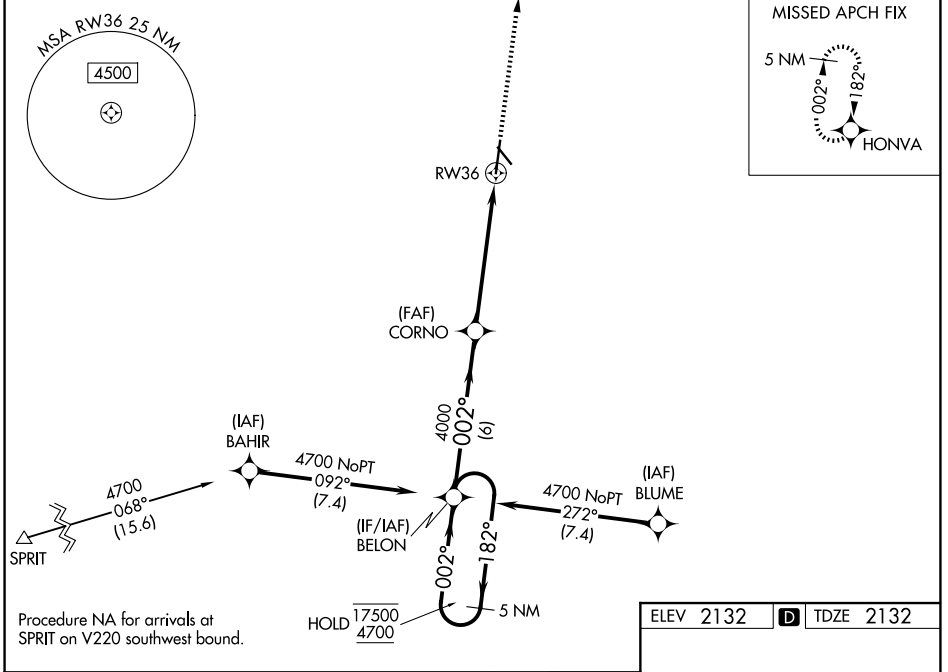
WAAS CH 90113 W36A	APP CRS 002°	Rwy Ldg 7094 TDZE 2132 Apt Elev 2132
--	------------------------	---

RNAV (GPS) RWY 36

KEARNEY RGNL (E.A.R.)

RNP APCH - GPS.	MALSR 	MISSED APPROACH: Climb to 4700 direct HONVA and hold.
For uncompensated Baro-VNAV systems, LNAV/VNAV NA below -22°C or above 54°C. For inop ALS, increase LNAV/VNAV all Cats visibility to 3/8 SM.		

AWOS-3PT 123.875	MINNEAPOLIS CENTER 119.4 278.8	UNICOM 123.0 (CTAF)
----------------------------	--	-------------------------------



ELEV 2132	D	TDZE 2132
-----------	----------	-----------

HIRL Rwy 18-36
MIRL Rwy 13-31
REIL Rwy 18

CATEGORY	A	B	C	D
LPV DA	2332-1/2		200 (200-1/2)	
LNAV/VNAV DA	2419-1/2		287 (300-1/2)	
LNAV MDA	2580-1/2 448 (500-1/2)		2580-7/8 448 (500-7/8)	
CIRCLING	2600-1 468 (500-1)		2640-1 1/2 508 (600-1 1/2) 2840-2 1/4 708 (800-2 1/4)	