

# RNAV (RNP) Z RWY 36R

AUSTIN-BERGSTROM INTL (AUS)

APP CRS	Rwy Ldg	<b>9000</b>
<b>355°</b>	TDZE	<b>480</b>
	Apt Elev	<b>542</b>

RNP AR APCH. RADAR required.

Simultaneous approach authorized. For uncompensated Baro-VNAV systems, procedure NA below -5°C or above 54°C. For inop ALS, increase RNP 0.11 all Cats visibility to RVR 4500, RNP 0.16 all Cats visibility to RVR 6000, and RNP 0.30 all Cats visibility to 1 1/4 SM.

MALSR

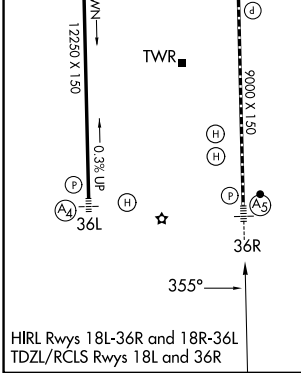
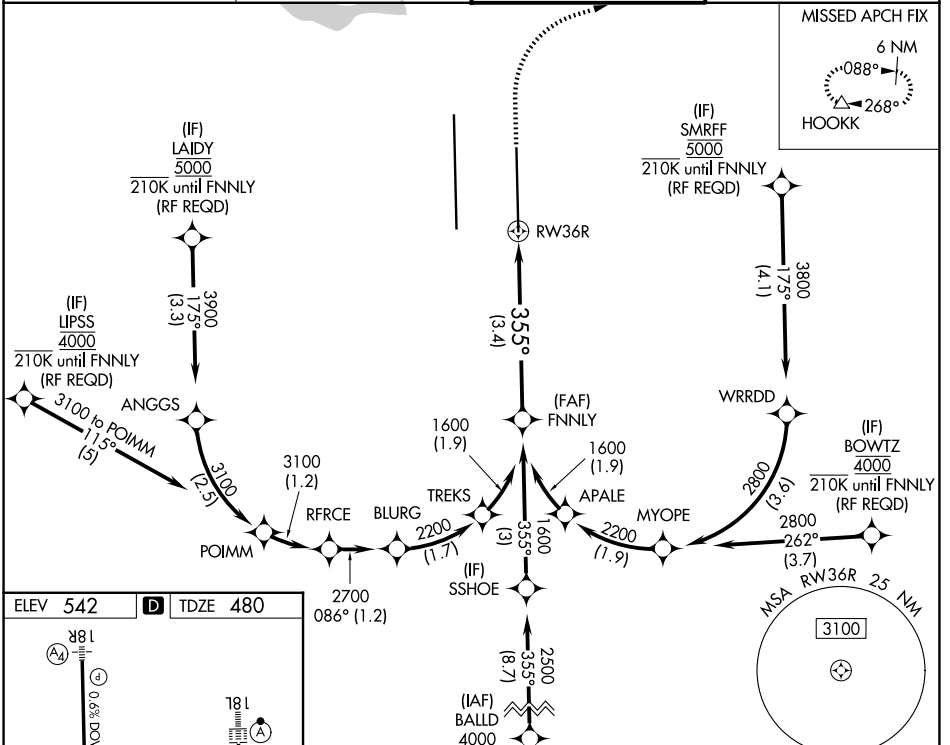
MISSED APPROACH: Climb to 1000 then climbing right turn to 3000 direct HOOKK and hold.

D-ATIS  
**124.4**

AUSTIN APP CON  
**127.225 317.65 (E)**  
**120.875 270.25 (S)**  
**119.0 370.85 (W)**

AUSTIN TOWER  
**121.0 281.5**

GND CON  
**121.9 348.6**



1000 3000 HOOKK VGSi and RNAV glidepath not coincident (VGSi Angle 3.00°/TCH 59°)

RW36R 355° 1600

See planview for multiple IF locations.

GP 3.00° TCH 52

CATEGORY	A	B	C	D
RNP 0.11 DA		744/24	264 (300-1/2)	
RNP 0.16 DA		862/35	382 (400-3/8)	
RNP 0.30 DA		915/40	435 (400-3/4)	

## AUTHORIZATION REQUIRED

SC-3, 25 DEC 2025 to 22 JAN 2026

SC-3, 25 DEC 2025 to 22 JAN 2026