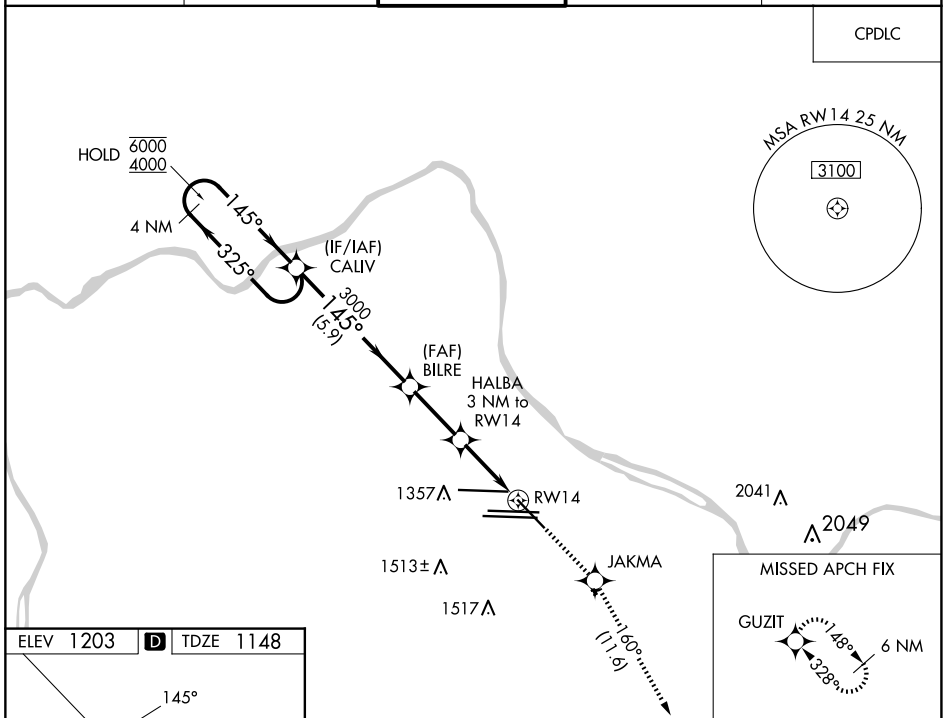


WAAS CH <b>77526</b> <b>W14A</b>	APP CRS <b>145°</b>	Rwy Ldg TDZE Apt Elev	<b>7366</b> <b>1148</b> <b>1203</b>
--	------------------------	-----------------------------	---

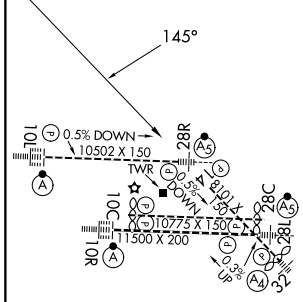
# RNAV (GPS) RWY 14

PITTSBURGH INTL (PIT)

RNP APCH - GPS.		MISSED APPROACH: Climb to 4000 direct JAKMA and on track 160° to GUZIT and hold.		
D-ATIS ARR <b>127.25</b> DEP <b>135.9</b>	PITTSBURGH APP CON <b>123.95 360.8</b>	PITTSBURGH TOWER <b>128.3 291.7</b>	GND CON SOUTH <b>121.9 348.6</b> NORTH <b>127.8 348.6</b>	CLNC DEL <b>126.75 353.7</b>



ELEV 1203	<b>D</b>	TDZE 1148
-----------	----------	-----------



VGSI and RNAV glidepath not coincident (VGSI Angle 3.00/TCH 67). 4 NM Holding Pattern CALIV				4000	JAKMA	GUZIT
GP 3.00° TCH 60				↑	tr 160°	↑
6000 ← 325° 4000 → 145°				3000	2160	1.3
5.9 NM 2.6 NM 1.7 NM 1.3 NM				3000	2160	1.3
CATEGORY	A	B	C	D		
LPV DA	1655-1 3/8		507 (500-1 3/8)			
LNAV/VNAV DA	1654-1 3/8		506 (500-1 3/8)			
LNAV MDA	1640/55	492 (500-1)	1640-1 3/8	492 (500-1 3/8)		
<b>C</b> CIRCLING	1700-1	497 (500-1)	1880-2 677 (700-2)	1880-2 1/4 677 (700-2 1/4)		

REIL Rwy 10C  
HIRL all Rwys  
TDZ/CL Rwys 10L, 10R, 28L, 28R,  
28C, and 32

NE-4, 25 DEC 2025 to 22 JAN 2026

NE-4, 25 DEC 2025 to 22 JAN 2026