

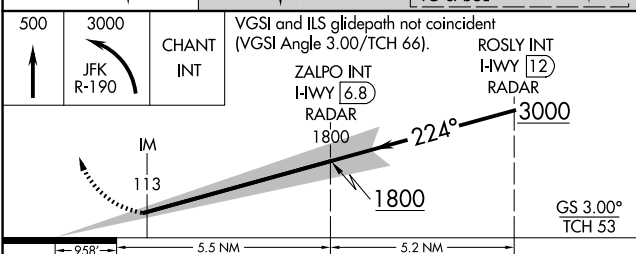
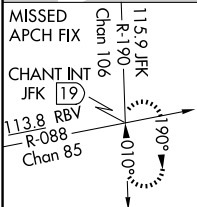
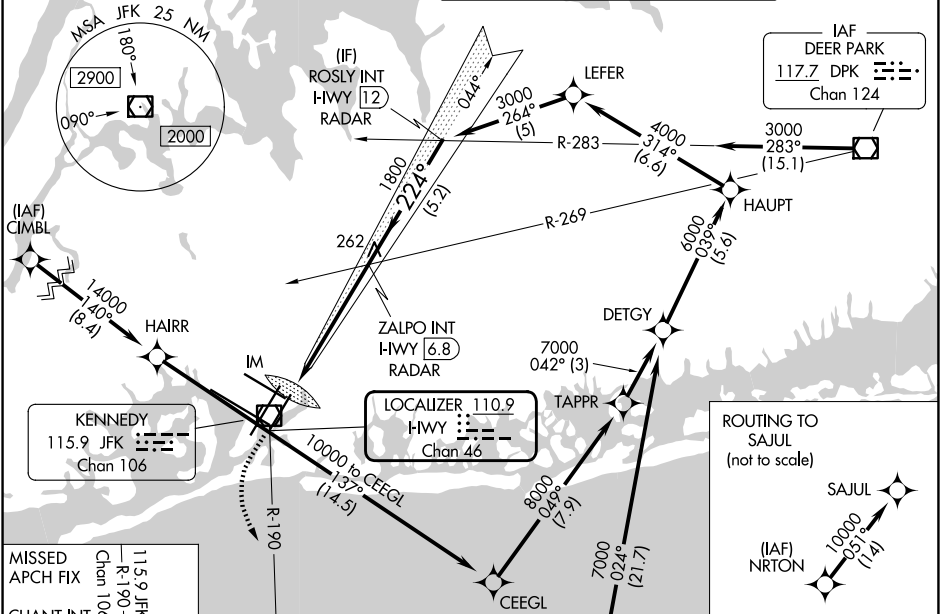
LOC/DME I-HWY 110.9 Chan 46	APP CRS 224°	Rwy Ldg 8400 TDZE 12 Apt Elev 13
---	------------------------	---

ILS RWY 22L (CAT II & III)

JOHN F KENNEDY INTL (JFK)

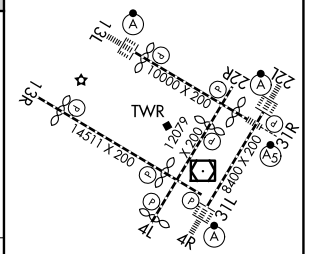
RNAV 1-GPS or RADAR required for procedure entry. From CIMBL, NRTON: RNAV 1-GPS required.	ALSIF-2 	MISSED APPROACH: Climb to 500 then climbing left turn to 3000 on JFK VOR/DME R-190 to CHANT INT/19 DME and hold.
Simultaneous approach authorized.		

D-ATIS (SW) 115.4	D-ATIS (NE) 117.7	NEW YORK APP CON 128.125 269.0	KENNEDY TOWER 119.1 281.55 123.9 281.55 (4R/22L and 13L/31R) (4L/22R and 13R/31L)	GND CON 121.9 348.6
-----------------------------	-----------------------------	---	---	--------------------------------------



CATEGORY	A	B	C	D
S-ILS 22L	CAT II RA 113/12 100 DA 112			
S-ILS 22L	CAT III RVR 06			

ELEV 13	D	TDZE 12
---------	----------	---------



CATEGORY II & III ILS - SPECIAL AIRCREW & AIRCRAFT CERTIFICATION REQUIRED

RLS Rwy's 13L and 13R
HIRL all Rwy's
TDZ/CL Rwy's 4L, 4R, 13L, 22L and 31R

NE-2, 25 DEC 2025 to 22 JAN 2026

NE-2, 25 DEC 2025 to 22 JAN 2026