

WAAS CH <b>87047</b> <b>W29A</b>	APP CRS <b>290°</b>	Rwy Ldg TDZE Apt Elev	<b>7011</b> <b>128</b> <b>132</b>
--	------------------------	-----------------------------	---


# RNAV (GPS) RWY 29

LAURENCE G HANSCOM FLD (BED)

RNP APCH - GPS.

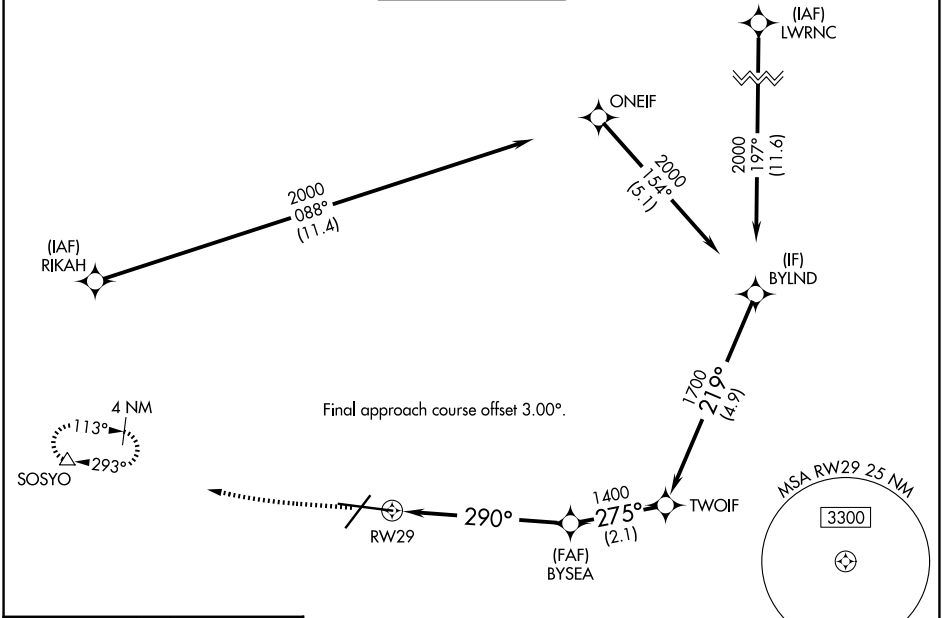
▼ For uncompensated Baro-VNAV systems, LNAV/VNAV NA below -19°C or above 54°C. For inop ALS, increase LNAV/VNAV all Cats visibility to 1½ SM and LNAV Cats C and D visibility to 1½ SM.

▲

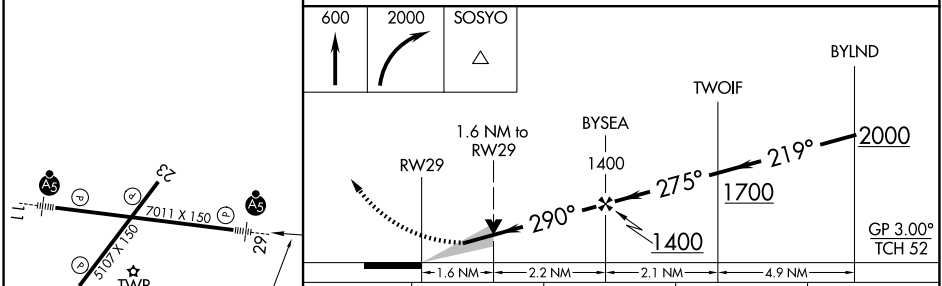
MALSRL 

MISSED APPROACH: Climb to 600 then climbing right turn to 2000 direct SOSYO and hold, continue climb-in-hold to 2000.



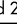
ATIS <b>124.6</b>	BOSTON APP CON <b>124.4 279.6</b>	<b>HANSCOM TOWER★</b> <b>118.5 (CTAF) 257.2</b>	GND CON <b>121.7</b>	UNICOM <b>122.95</b>
----------------------	--------------------------------------	--	-------------------------	-------------------------



ELEV 132	<b>D</b>	TDZE 128
----------	----------	----------



CATEGORY	A	B	C	D
LPV DA		378-½	250 (300-½)	
LNAV/VNAV DA		639-1	511 (600-1)	
LNAV MDA	700-½	572 (600-½)	700-1¼	572 (600-1¼)
CIRCLING	720-1	588 (600-1)	880-2¼ 748 (800-2¼)	920-2½ 788 (800-2½)

MIRL Rwy 5-23   
 HIRL Rwy 11-29   
 REIL Rwy 5 and 23 

BEDFORD, MASSACHUSETTS  
 Orig 27NOV25

42°28'N-71°17'W

## LAURENCE G HANSCOM FLD (BED)

# RNAV (GPS) RWY 29

NE-1, 25 DEC 2025 to 22 JAN 2026

NE-1, 25 DEC 2025 to 22 JAN 2026