


LOC I-JDP 108.7	APP CRS 276°	Rwy Ldg 12000
		TDZE 875
		Apt Elev 896

ILS RWY 27 (SA CAT I & II)

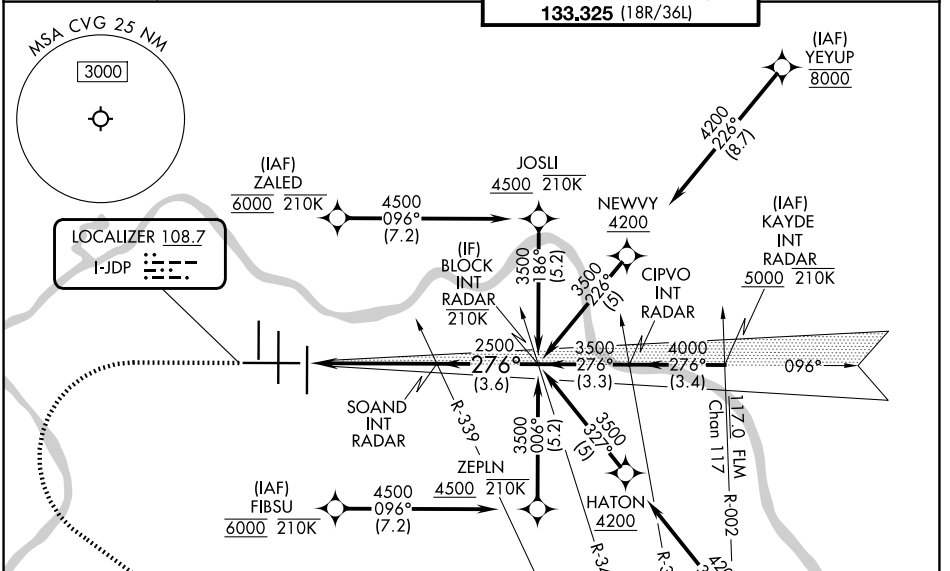
CINCINNATI/NORTHERN KENTUCKY INTL (CVG)

RNP APCH - GPS. From FISBU, BREWZ, ZALED or YEYUP.
 RADAR required for procedure entry at KAYDE.
 SA Cat I & II: Requires specific OPSPEC, MSPEC, or LOA approval.


MALS R 

MISSED APPROACH: Climb to 2000 then climbing left turn to 3000 direct FLM VOR/DME and hold.

D-ATIS 134.375	CINCINNATI APP CON 119.7 363.15 (090°-269°) 123.875 363.15 (270°-089°)	CINCINNATI TOWER 118.975 360.85 (18L/36R) 118.3 (9/27, 18C/36C) 133.325 (18R/36L)	GND CON 121.7
--------------------------	--	---	-------------------------



ELEV 896	D	TDZE 875
----------	----------	----------

MISSED APCH FIX 

FALMOUTH FLM 117.0 Chan 117

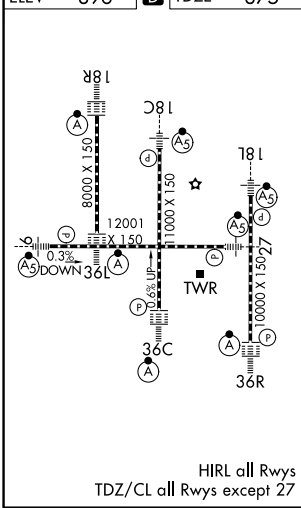
VGSI and ILS glidepath not coincident (VGSI Angle 3.00/TCH 67).

SOAND INT RADAR 2500

BLOCK INT RADAR 3500

GS 3.00° TCH 55

4.9 NM, 3.6 NM, 1176'



CATEGORY	A	B	C	D
S-ILS 27	SA CAT I	RA 136/14	150 DA 1025	
S-ILS 27	SA CAT II	RA 92/12	100 DA 975	

SA CATEGORY I & II ILS - SPECIAL AIRCREW & AIRCRAFT CERTIFICATION REQUIRED

SE-1, 25 DEC 2025 to 22 JAN 2026

SE-1, 25 DEC 2025 to 22 JAN 2026