

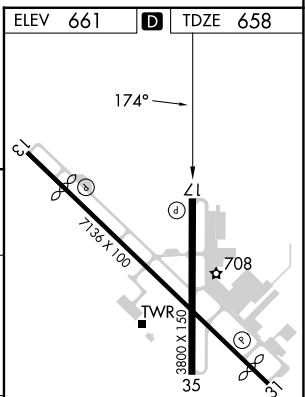
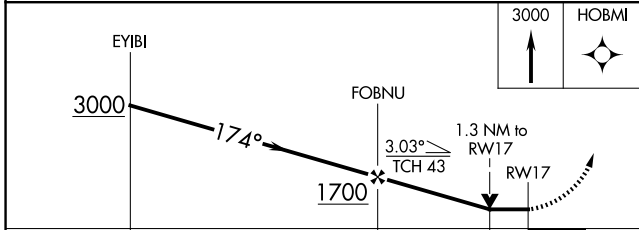
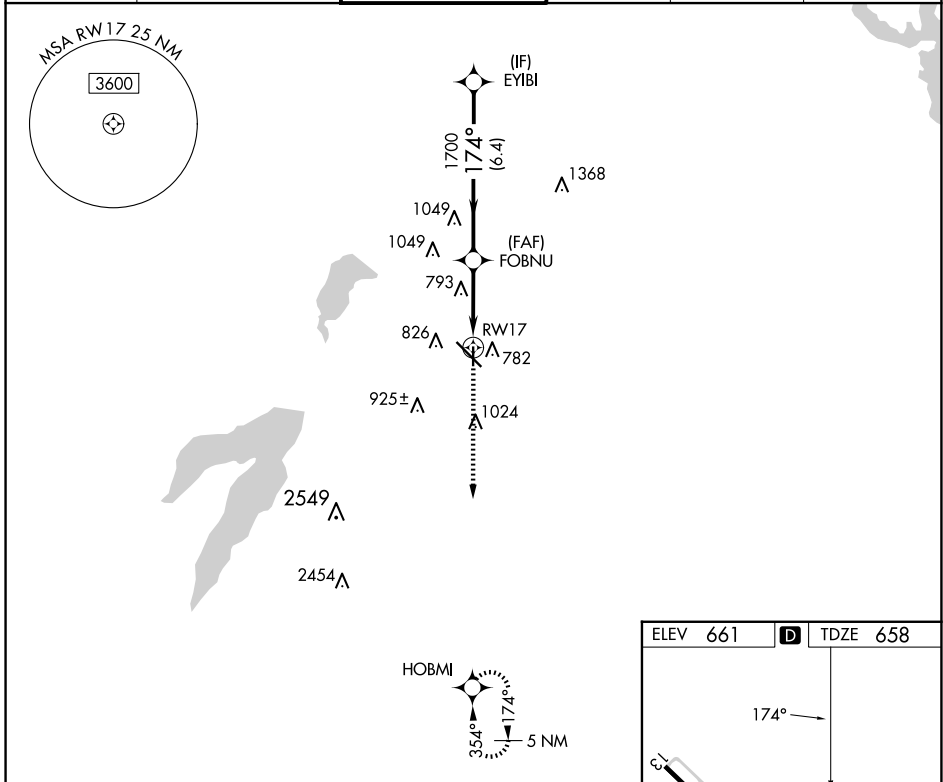
APP CRS <b>174°</b>	Rwy ldg <b>3800</b>
	TDZE <b>658</b>
	Apt Elev <b>661</b>

# RNAV (GPS) RWY 17

DALLAS EXEC (R.B.D)

RNP APCH.		MISSED APPROACH: Climb to 3000 direct HOBMI and hold.			
Rwy 17 helicopter visibility reduction below 3/4 SM NA.					

ATIS <b>126.35</b>	LONE STAR APP CON <b>125.2 343.65</b>	EXECUTIVE TOWER * <b>127.25 (CTAF) ①</b>	GND CON <b>119.475</b>	CLNC DEL <b>118.625</b>	UNICOM <b>122.95</b>
-----------------------	--	---	---------------------------	----------------------------	-------------------------



	6.4 NM		1.8 NM		1.3
CATEGORY	A	B	C	D	
RNAV MDA	1100-1	442 (500-1)	1100-1 <sup>3</sup> / <sub>8</sub> 442 (500-1 <sup>3</sup> / <sub>8</sub> )	1100-1 <sup>1</sup> / <sub>2</sub> 442 (500-1 <sup>1</sup> / <sub>2</sub> )	
CIRCLING	1160-1 499 (500-1)	1220-1 559 (600-1)	1340-2 679 (700-2)	1400-2 <sup>1</sup> / <sub>4</sub> 739 (800-2 <sup>1</sup> / <sub>4</sub> )	

REIL Rwy 13, 17, 31 and 35  
MIRL Rwy 13-31 and 17-35 ①

SC-2, 25 DEC 2025 to 22 JAN 2026

SC-2, 25 DEC 2025 to 22 JAN 2026