

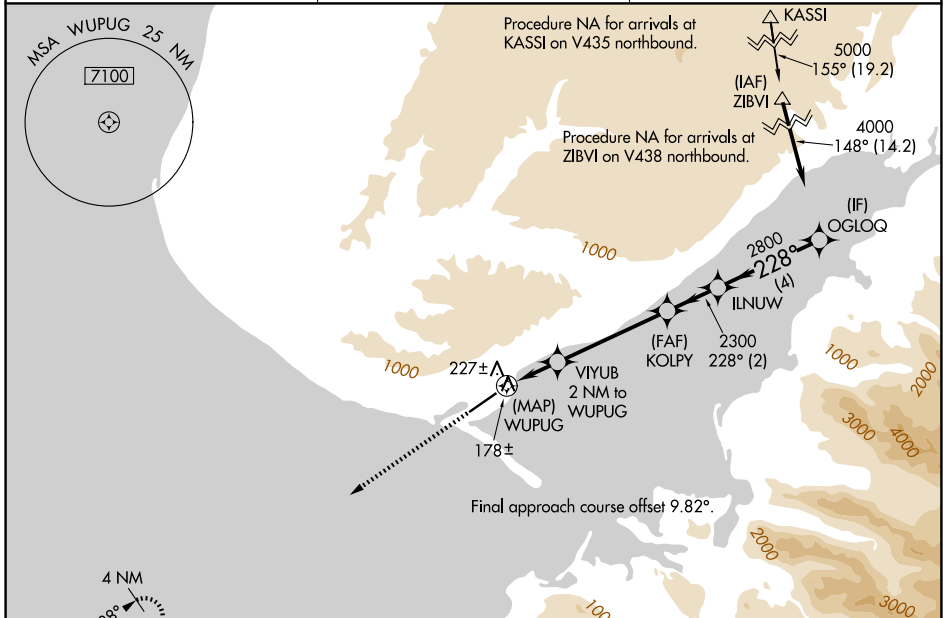
WAAS CH <b>72633</b> <b>W22B</b>	APP CRS <b>228°</b>	Rwy Ldg TDZE Apt Elev	<b>6701</b> <b>84</b> <b>84</b>
--	------------------------	-----------------------------	---------------------------------------

# RNAV (GPS) Y RWY 22

HOMER (HOM) (PAHO)

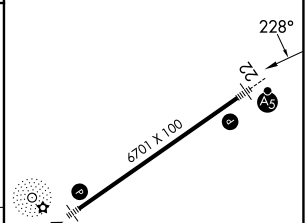
RNP APCH.	MALSR	MISSED APPROACH: Climb to 2600 direct PLUCK and hold.
<p>▼ Inop table does not apply to LP and LNAV Cat A/B. Circling NA northwest of Rwy 4-22. Circling NA to waterways 6W and 24W. For inop ALS, increase LP Cat C/D visibility to 1 1/2 SM and LNAV Cat C/D to 1 7/8 SM.</p>		

AFIS <b>135.65</b>	ANCHORAGE CENTER <b>125.9 270.3</b>	HOMER RADIO <b>123.6 (CTAF)</b>
-----------------------	--	------------------------------------



ELEV 84	TDZE 84
---------	---------

2600	PLUCK
↑	
WUPUG	OGLOQ
920	4000
2300	2800
2 NM	4 NM



CATEGORY	A	B	C	D
LP MDA	500-1 416 (500-1)			
LNAV MDA	760-1 676 (700-1)	760-1 1/2 676 (700-1 1/2)		
CIRCLING	760-1 676 (700-1)	760-2 676 (700-2)	760-2 1/4 676 (700-2 1/4)	

HIRL Rwy 4-22
---------------

AK, 27 NOV 2025 to 22 JAN 2026

AK, 27 NOV 2025 to 22 JAN 2026