

WAAS CH <b>77800</b> <b>W09A</b>	APP CRS <b>092°</b>	Rwy Idg TDZE Apt Elev	<b>5600</b> <b>418</b> <b>452</b>
--	------------------------	-----------------------------	---

# RNAV (GPS) RWY 9

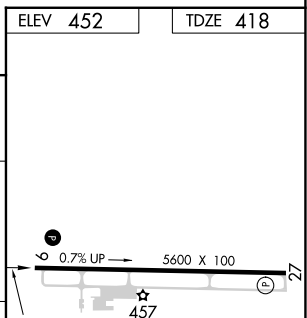
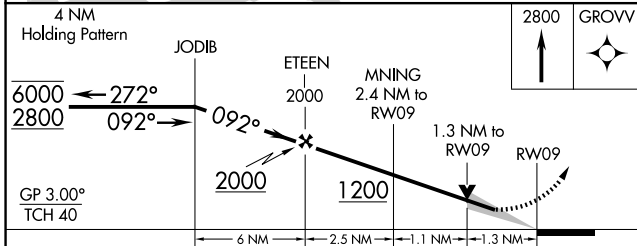
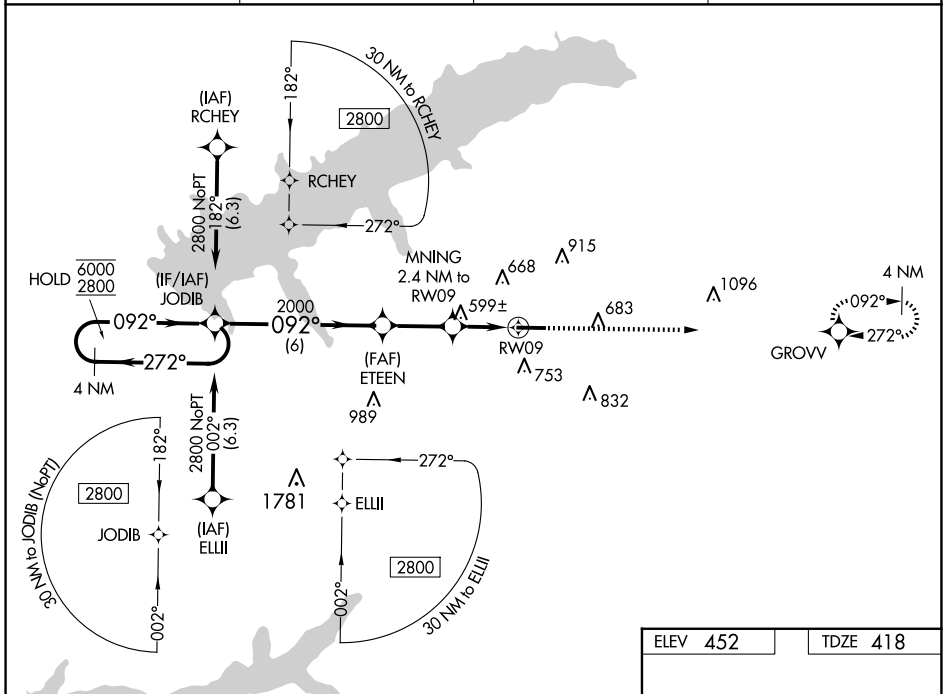
UNIVERSITY-OXFORD (UOX)

RNP APCH - GPS.

▼ For uncompensated Baro-VNAV systems, UNAV/VNAV NA below -15°C or above 54°C.

▲ MISSED APPROACH: Climb to 2800 direct GROVV and hold.

AWOS-3PT <b>132.725</b>	MEMPHIS CENTER <b>128.5 279.55</b>	GCO <b>135.075</b>	UNICOM <b>123.0 (CTAF) 0</b>
----------------------------	---------------------------------------	-----------------------	---------------------------------



CATEGORY	A	B	C	D
LPV DA	618-3/4 200 (200-3/4)			
RNAV/VNAV DA	940-1/2 522 (500-1/2)	940-1 522 (500-1 1/2)		
RNAV MDA	860-1	442 (500-1)	860-1 3/8	442 (500-1 3/8)
CIRCLING	980-1 528 (600-1)	1060-1 608 (700-1)	1380-2 3/4 928 (1000-2 3/4)	1380-3 928 (1000-3)

MIRL Rwy 9-27 0

REIL Rwy 9 and 27 0

SC-4, 25 DEC 2025 to 22 JAN 2026

SC-4, 25 DEC 2025 to 22 JAN 2026