

WAAS CH 90141 W23A	APP CRS 233°	Rwy Ldg 7001 TDZE 671 Apt Elev 683
--	------------------------	---

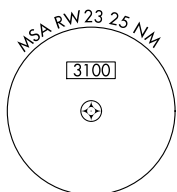
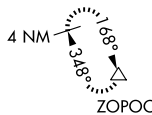
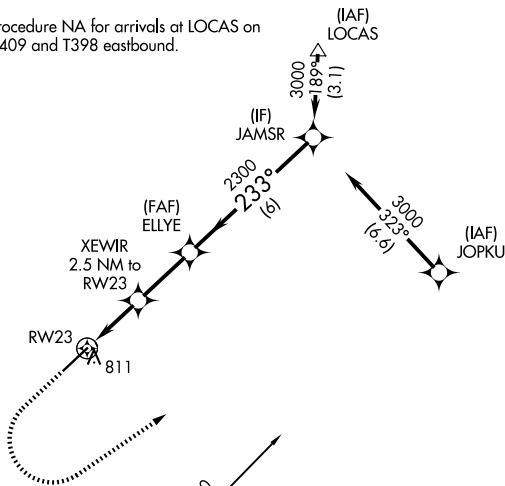
RNAV (GPS) RWY 23

CHARLOTTE/MONROE EXEC (EQY)

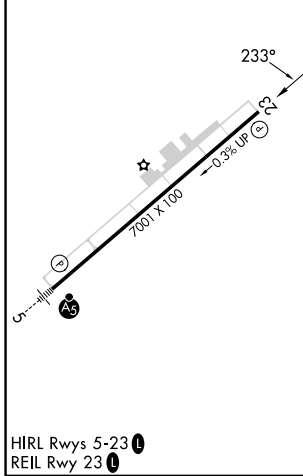
RNP APCH-GPS.		MISSED APPROACH: Climb to 1200 then climbing left turn to 3000 direct ZOPOC and hold.	
<p>⚠ Rwy 23 helicopter visibility reduction below 3/4 SM NA. For uncompensated Baro-VNAV systems, LNAV/VNAV NA below -7°C or above 54°C.</p>			

ASOS 135.775	CHARLOTTE APP CON 120.05 307.8	CLNC DEL 132.55	UNICOM 122.7 (CTAF) 0
------------------------	--	---------------------------	---------------------------------

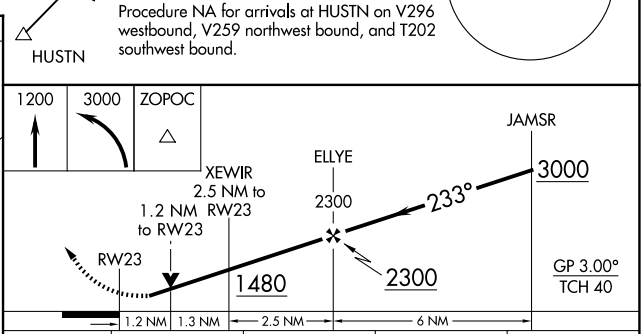
Procedure NA for arrivals at LOCAS on V409 and T398 eastbound.



ELEV 683	TDZE 671
----------	----------



HIRL Rwy 5-23 **0**
REIL Rwy 23 **0**



CATEGORY	A	B	C	D
LPV DA		939-1	268 (300-1)	
LNAV/VNAV DA		981-1	310 (300-1)	
LNAV MDA	1080-1	409 (400-1)	1080-1½	409 (400-1½)
CIRCLING	1220-1	537 (600-1)	1220-1½ 537 (600-1½)	1480-2½ 797 (800-2½)