

ILS or LOC RWY 3

LOC/DME I-AEZ 108.5 Chan 22	APCH CRS 029°	Rwy ldg 8637 TDZE 685 Arpt Elev 690
-------------------------------------------------	-------------------------	----------------------------------------------------------------

[USA]

WHEELER-SACK AAF (KGTB)

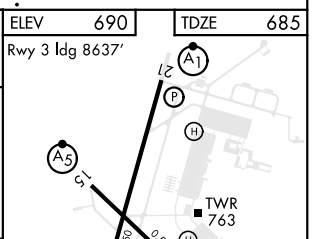
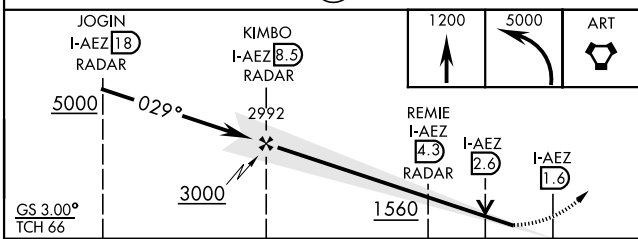
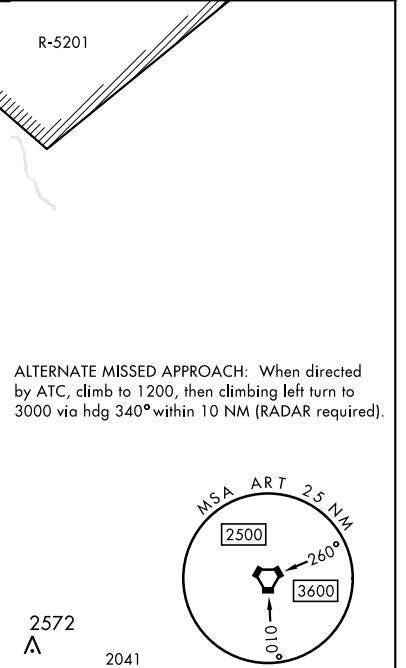
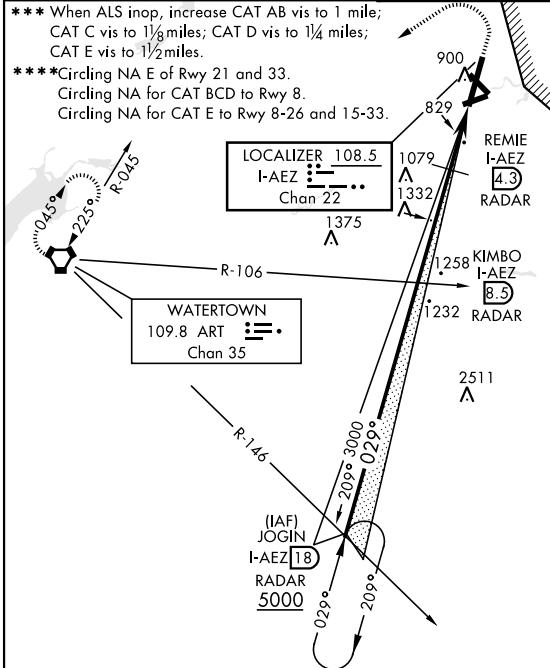
DME or RADAR required. RADAR required for procedure entry.

▼ * When ALS inop, increase vis to 7/8 mile.
 ** When ALS inop, increase CAT A vis to 1 mile, CAT B vis to 1 1/4 miles, CAT C vis to 2 1/2 miles, CAT D vis to 2 3/4 miles, CAT E vis to 3 miles.

ALSF-1

MISSED APPROACH: Climb to 1200, then climbing left turn to 5000 direct ART VORTAC and hold. Continue climb-in-hold to 5000.

ATIS 119.525	APP CON 124.875 307.125	TOWER 118.75 290.25	GND CON 123.65 229.8	CLNC DEL 123.65	ASR/PAR
------------------------	-----------------------------------	-------------------------------	--------------------------------	---------------------------	---------



CATEGORY	A	B	C	D	E
S-ILS 3 *	957-1/2		272	(300-1/2)	
S-LOC 3 **	1560-1/2 875 (900-1/2)	1560-3/4 875 (900-3/4)	1560-2 875 (900-2)	1560-2 1/4 875 (900-2 1/4)	1560-2 1/2 875 (900-2 1/2)
**** CIRCLING	1560-1 1/4 870 (900-1 1/4)		1560-2 1/2 870 (900-2 1/2)	1560-2 3/4 870 (900-2 3/4)	1640-3 950 (1000-3)
DME MINIMUMS					
S-LOC 3 ***	1080-1/2 395 (400-1/2)		1080-3/4 395 (400-3/4)	1080-1 395 (400-1)	
**** CIRCLING	1200-1 510 (600-1)		1220-1 1/2 530 (600-1 1/2)	1380-2 1/4 690 (700-2 1/4)	1640-3 950 (1000-3)

ELEV	690				TDZE	685
Rwy 3 ldg 8637'						
FAF to MAP 6.9 NM						
Knots	60	90	120	150	180	
Min:Sec	6:54	4:36	3:27	2:46	2:18	

ILS or LOC RWY 3

NE-2, 25 DEC 2025 to 22 JAN 2026

NE-2, 25 DEC 2025 to 22 JAN 2026