

WAAS CH 99321 W24B	APP CRS 240°	Rwy Idg TDZE 144 Aprt Elev 144	5002
----------------------------------------	------------------------	----------------------------------------------------	-------------

RNAV (GPS) Y RWY 24

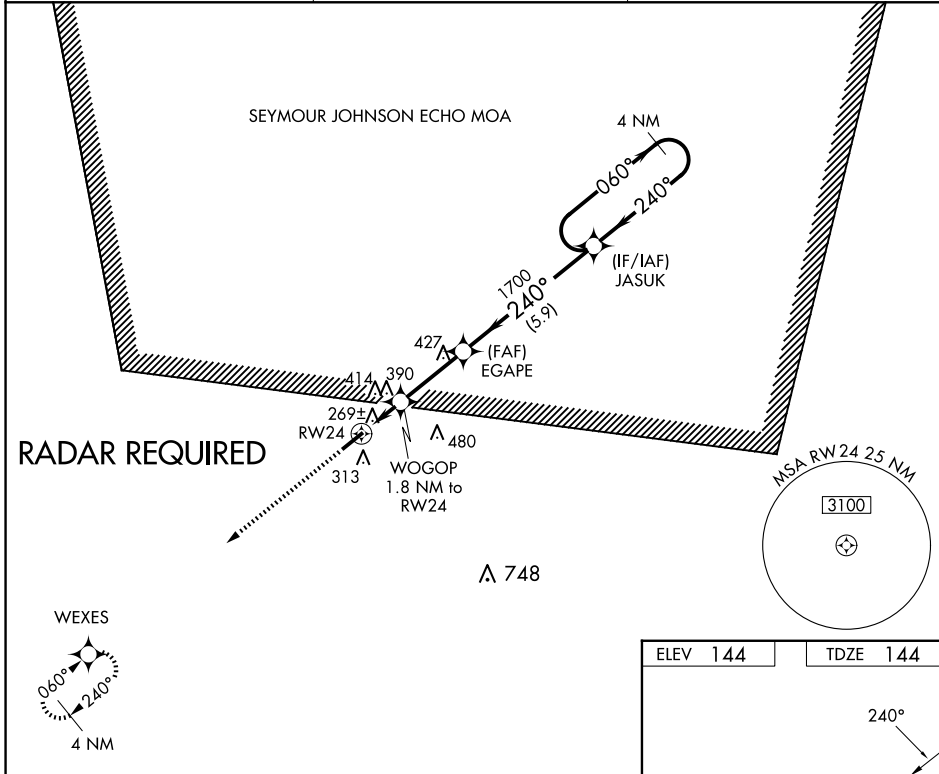
CLINTON-SAMPSON COUNTY (CTZ)

RNP APCH-GPS.

▼ Rwy 24 helicopter visibility reduction below 3/4 SM NA. When local altimeter setting not received, use DPL altimeter setting and increase all MDAs 60 feet and visibility
▲ Cats C and D 1/2 SM.

MISSED APPROACH: Climb to 2500 direct WEXES and hold.

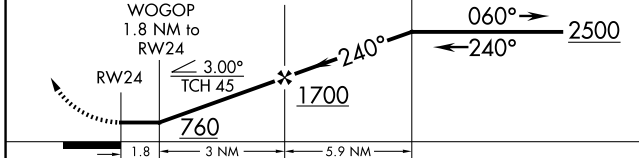
AWOS-3 119.125	FAYETTEVILLE APP CON 133.0 290.25	UNICOM 122.8 (CTAF) 0
--------------------------	---------------------------------------------	---------------------------------



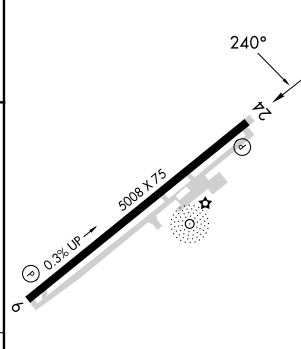
SE-2, 25 DEC 2025 to 22 JAN 2026

SE-2, 25 DEC 2025 to 22 JAN 2026

2500 WEXES
 ↑ WEXES
 VGSI and descent angles not coincident (VGSI Angle 3.00/TCH 40). JASUK



ELEV 144	TDZE 144
----------	----------



CATEGORY	A	B	C	D
LP MDA	560-1	416 (500-1)	560-1 1/8	416 (500-1 1/8)
LNAV MDA	640-1	496 (500-1)	640-1 3/8	496 (500-1 3/8)
CIRCLING	680-1 536 (600-1)	780-1 636 (700-1)	840-2 696 (700-2)	840-2 1/4 696 (700-2 1/4)

MIRL Rwy 6-24
 REIL Rwy 6 and 24