

WAAS CH 69624 W09A	APP CRS 088°	Rwy Ldg TDZE Apt Elev	5000 2933 2933
--	------------------------	-----------------------------	---

RNAV (GPS) RWY 9

GARRETT COUNTY (2G4)

RNP APCH - GPS.

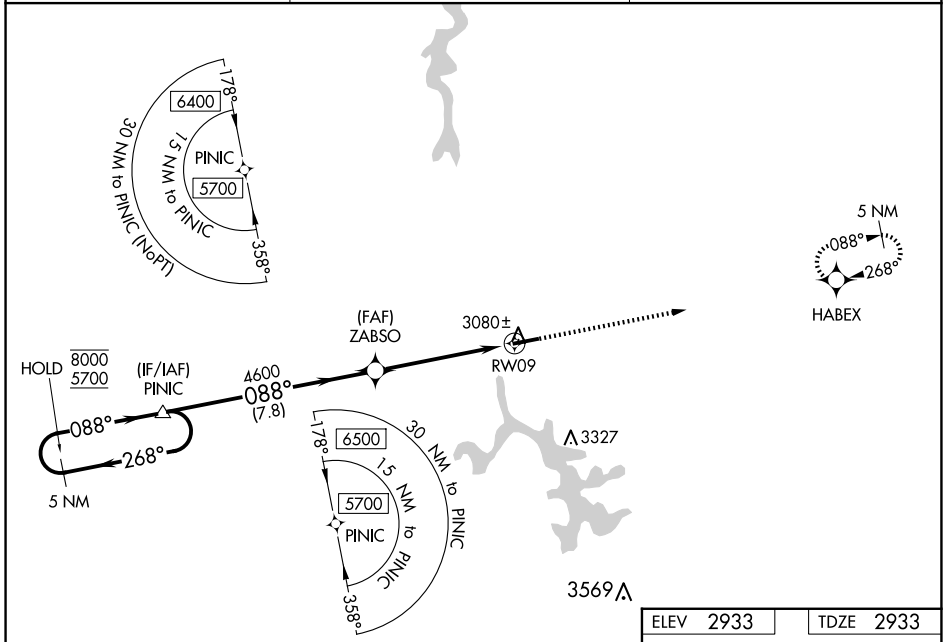
▼ Rwy 9 helicopter visibility reduction below 3/4 SM NA. For uncompensated Baro-VNAV systems, LNAV/VNAV NA below -20°C or above 54°C. Baro-VNAV and VDP NA when using MGW altimeter setting. When local altimeter setting not received, use MGW altimeter setting and increase LPV DA to 3483 feet and all visibilities 3/8 SM. Increase LNAV/VNAV DA to 3538 feet and all visibilities 3/8 SM; increase all MDAs 300 feet and LNAV visibility Cat C 3/8 SM, and Circling visibility Cat C 1 SM.

MISSED APPROACH:
Climb to 5600 direct HABEX and hold, continue climb-in-hold to 5600.

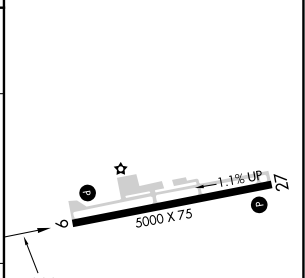
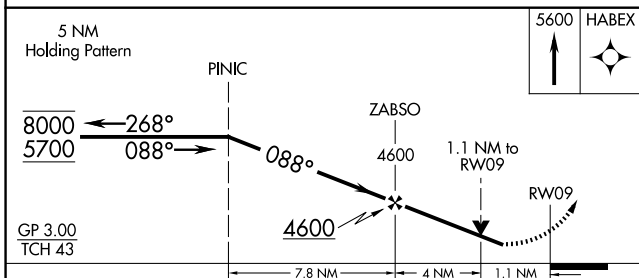
AWOS-3
120.125

CLARKSBURG APP CON ★
119.425 284.65

UNICOM
123.0 (CTAF) 0



ELEV 2933	TDZE 2933
-----------	-----------



CATEGORY	A	B	C	D
LPV DA	3183-3/4	250 (300-3/4)		NA
LNAV/VNAV DA	3238-7/8	305 (400-7/8)		NA
LNAV MDA	3340-1	407 (500-1)	3340-1 1/8 407 (500-1 1/8)	NA
C CIRCLING	3380-1 447 (500-1)	3400-1 467 (500-1)	3500-1 1/2 567 (600-1 1/2)	NA

REIL Rwy 9 and 27 **0**
MIRL Rwy 9-27 **0**

NE-3, 25 DEC 2025 to 22 JAN 2026

NE-3, 25 DEC 2025 to 22 JAN 2026