

APP CRS	Rwy Ldg	<b>4302</b>
<b>239°</b>	TDZE	<b>701</b>
	Apt Elev	<b>704</b>

# RNAV (GPS) RWY 24

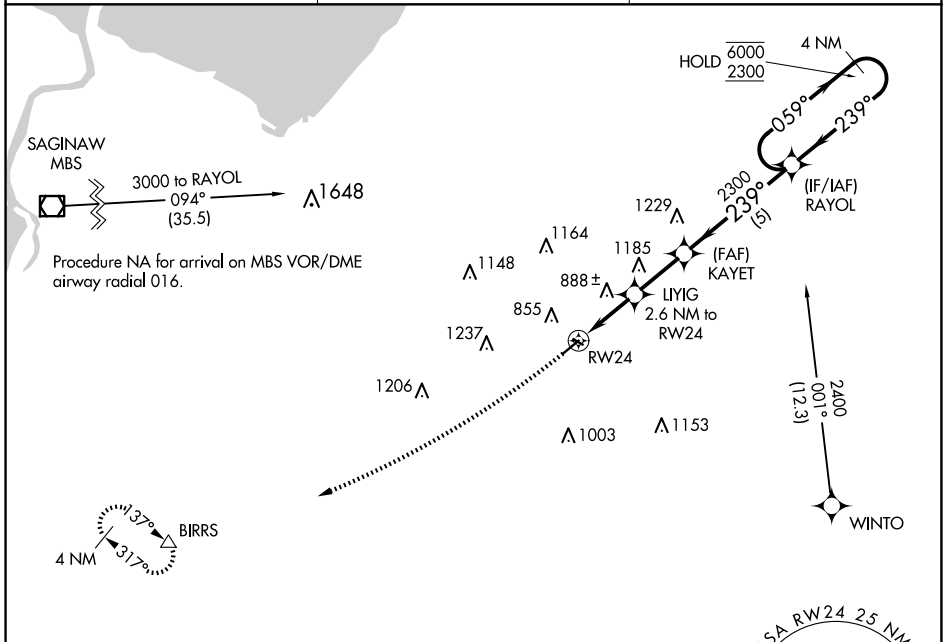
TUSCOLA AREA (CFS)

RNP APCH - GPS.

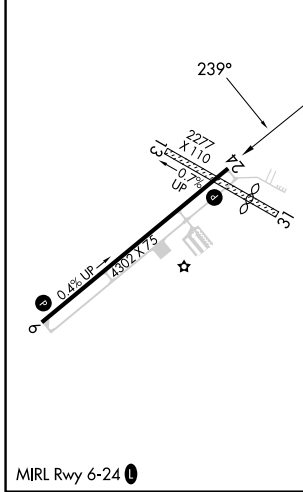
**⚠** Circling NA to Rwys 13 and 31. Rwy 24 helicopter visibility reduction below 1 SM NA. Procedure NA at night.

**⚠** MISSED APPROACH: Climbing right turn to 3100 direct BIRRS and hold.

AWOS-3 <b>119.275</b>	GREAT LAKES APP CON * <b>120.95 235.625</b>	UNICOM <b>123.0 (CTAF) 0</b>
--------------------------	--	---------------------------------



ELEV 704	TDZE 701
----------	----------



BIRRS VGSI and descent angles not coincident (VGSI Angle 3.50/TCH 48).	4 NM Holding Pattern			
	LIYIG 2.6 NM to RW24 KAYET 2300 RAYOL 059° → 6000 / 2300 ← 239°			
	2.6 NM	2.3 NM	5 NM	
CATEGORY	A	B	C	D
LNAV MDA	1140-1	439 (500-1)	1140-1¼ 439 (500-1¼)	NA
<b>C</b> CIRCLING	1200-1	496 (500-1)	1600-2¾ 896 (900-2¾)	NA

EC-1, 25 DEC 2025 to 22 JAN 2026

EC-1, 25 DEC 2025 to 22 JAN 2026