

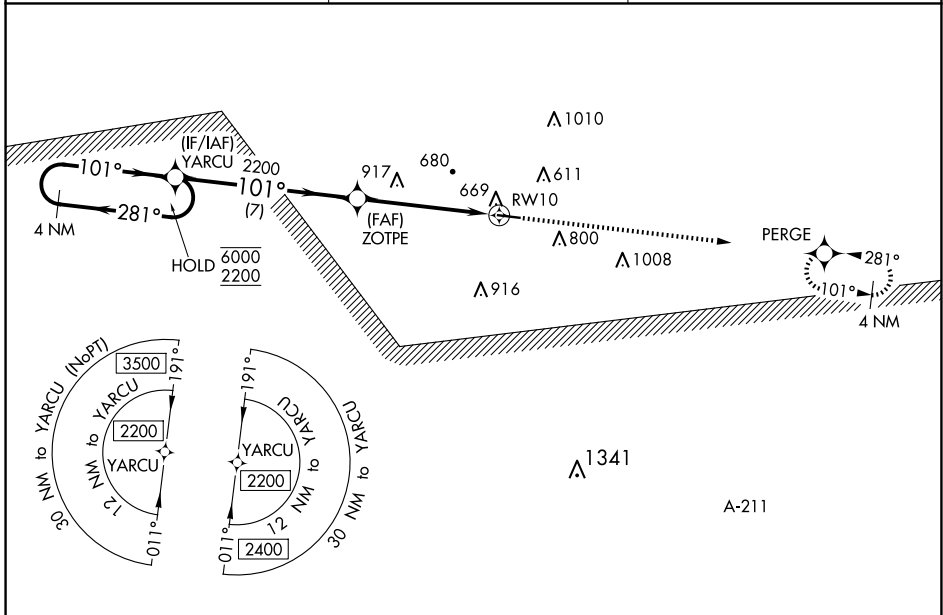
WAAS CH 53436 W10A	APP CRS 101°	Rwy Idg TDZE Apt Elev	4732 434 435
--	------------------------	-----------------------------	---

RNAV (GPS) RWY 10

CLAYTON MUNI (11A)

RNP APCH - GPS.		MISSED APPROACH: Climb to 2200 direct PERGE and hold.
<p>▼ Rwy 10 helicopter visibility reduction below ¾ SM NA. Baro-VNAV NA. ▲ NA Use Eufaula altimeter setting; when not received, use Troy altimeter setting.</p>		

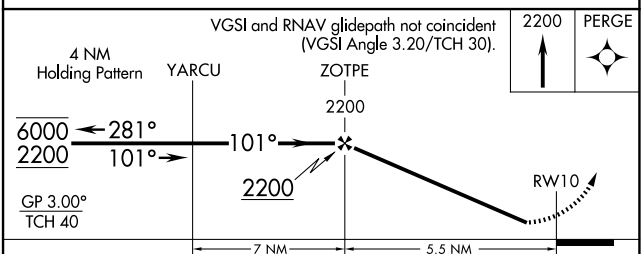
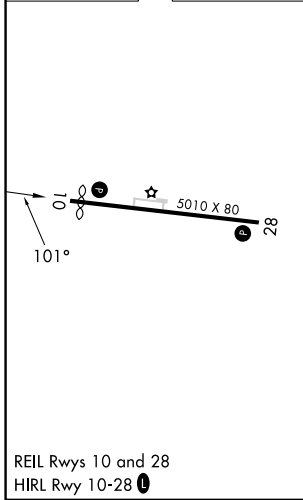
EUF ASOS 128.325	CAIRNS APP CON * 121.1 319.25	CTAF 122.90
----------------------------	---	-----------------------



SE-4, 25 DEC 2025 to 22 JAN 2026

SE-4, 25 DEC 2025 to 22 JAN 2026

ELEV 435	TDZE 434
----------	----------



CATEGORY	A	B	C	D
LPV DA	781-1 347 (400-1)			
LNAV/VNAV DA	1115-2½ 681 (700-2½)			
LNAV MDA	1180-1 746 (800-1)	1180-1¼ 746 (800-1¼)	1180-2 746 (800-2)	
C CIRCLING	1180-1 745 (800-1)	1180-1¼ 745 (800-1¼)	1180-2¼ 745 (800-2¼)	1300-2¾ 865 (900-2¾)