

APP CRS **190°**
 Rwy Idg **5201**
 TDZE **726**
 Apt Elev **726**

RNAV (GPS) RWY 19

JAMES A RHODES (JRO)

RNP APCH - GPS.

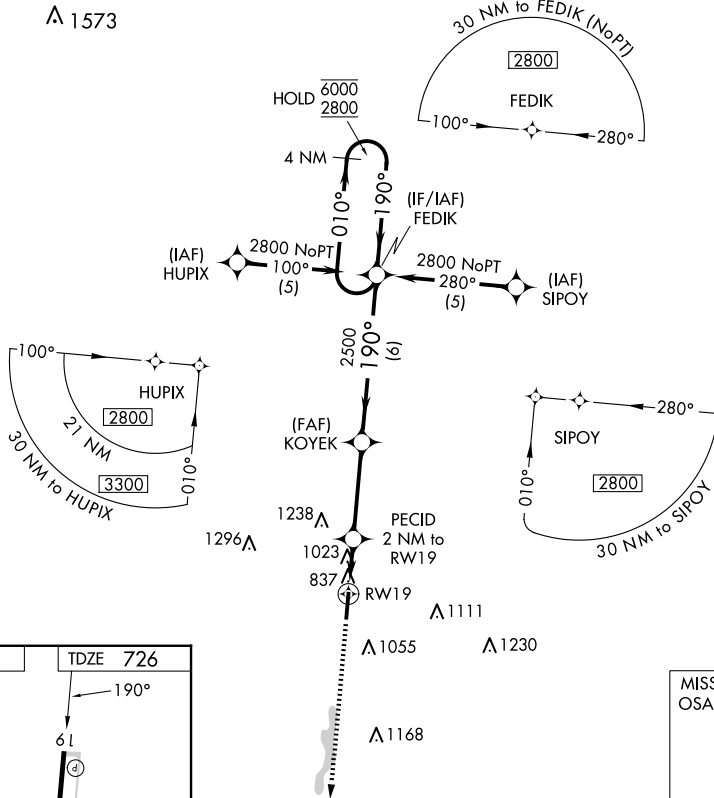
▼ Procedure NA at night.
▲ Rwy 19 helicopter visibility reduction below 1 SM NA.

MISSED APPROACH: Climb to 2800 direct OSATE and hold.

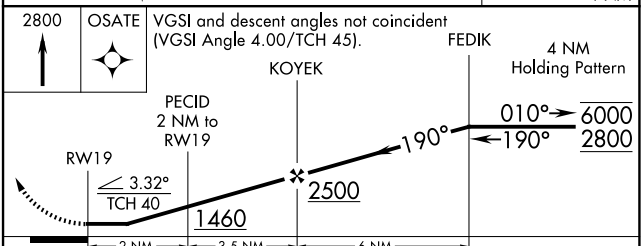
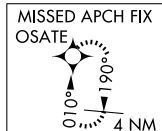
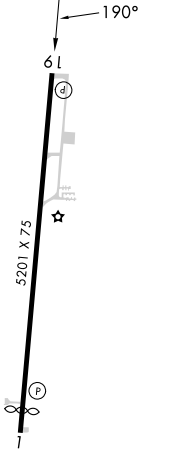
AWOS-3PT **118.825**

HUNTINGTON APP CON **128.4 270.1**

UNICOM **122.7 (CTAF) 0**



ELEV **726** | TDZE **726**



CATEGORY	A	B	C	D
LNAV MDA	1280-1	554 (600-1)	1280-1 $\frac{5}{8}$	554 (600-1 $\frac{5}{8}$)
CIRCLING	1340-1 614 (700-1)	1480-1 754 (800-1)	1680-3	954 (1000-3)

EC-2, 25 DEC 2025 to 22 JAN 2026

EC-2, 25 DEC 2025 to 22 JAN 2026