

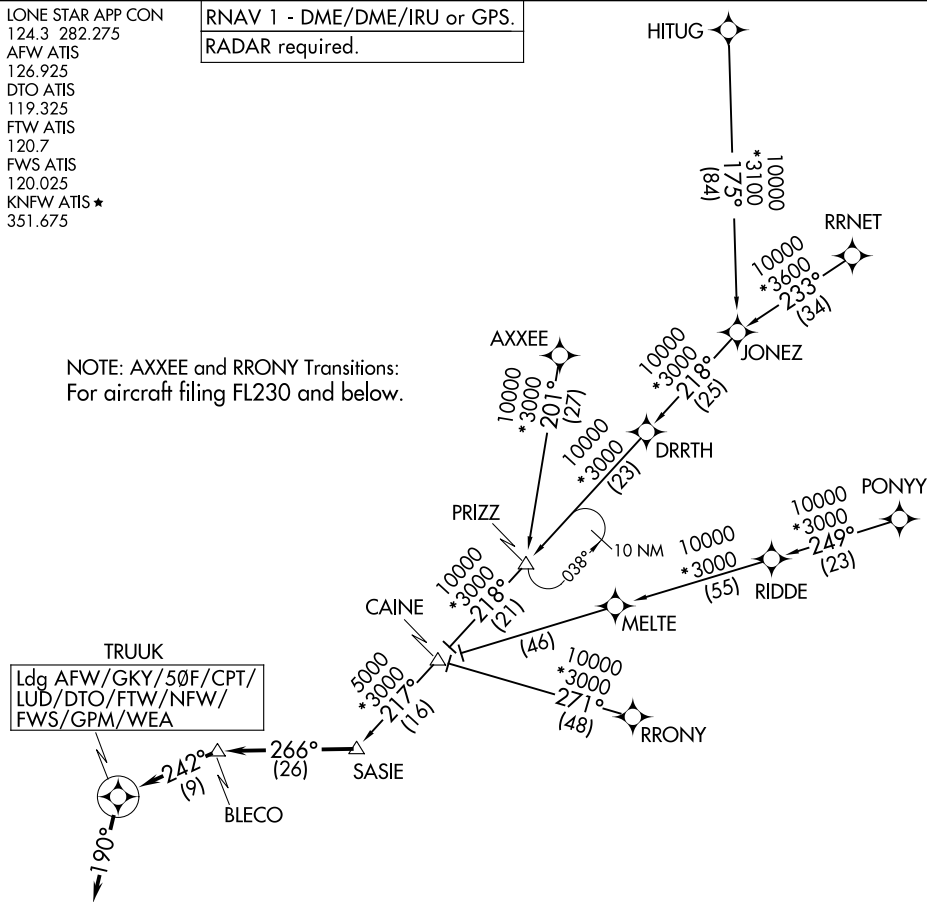
TRUUK THREE ARRIVAL (RNAV)

FORT WORTH, TEXAS

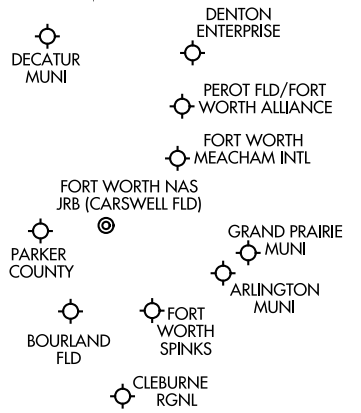
LONE STAR APP CON
 124.3 282.275
 AFW ATIS
 126.925
 DTO ATIS
 119.325
 FTW ATIS
 120.7
 FWS ATIS
 120.025
 KNFW ATIS ★
 351.675

RNAV 1 - DME/DME/IRU or GPS.
RADAR required.

NOTE: AXSEE and RRONY Transitions:
 For aircraft filing FL230 and below.



TRUUK
Ldg AFW/GKY/50F/CPT/ LUD/DTO/FTW/NFW/ FWS/GPM/WEA



ARRIVAL ROUTE DESCRIPTION

AXSEE TRANSITION (AXSEE.TRUUK3)
HITUG TRANSITION (HITUG.TRUUK3)
PONY TRANSITION (PONY.TRUUK3)
RRNET TRANSITION (RRNET.TRUUK3)
RRONY TRANSITION (RRONY.TRUUK3)

LANDING ALL AIRPORTS: From SASIE on track 266° to BLECO, then on track 242° to TRUUK, then on track 190°. Expect RADAR vectors to final approach course.

NOTE: Chart not to scale.

SC-2, 25 DEC 2025 to 22 JAN 2026

SC-2, 25 DEC 2025 to 22 JAN 2026

TRUUK THREE ARRIVAL (RNAV)

FORT WORTH, TEXAS