

APP CRS <b>067°</b>	Rwy Ldg TDZE Apt Elev <b>N/A</b> <b>N/A</b> <b>5863</b>
------------------------	--

# RNAV (GPS)-A

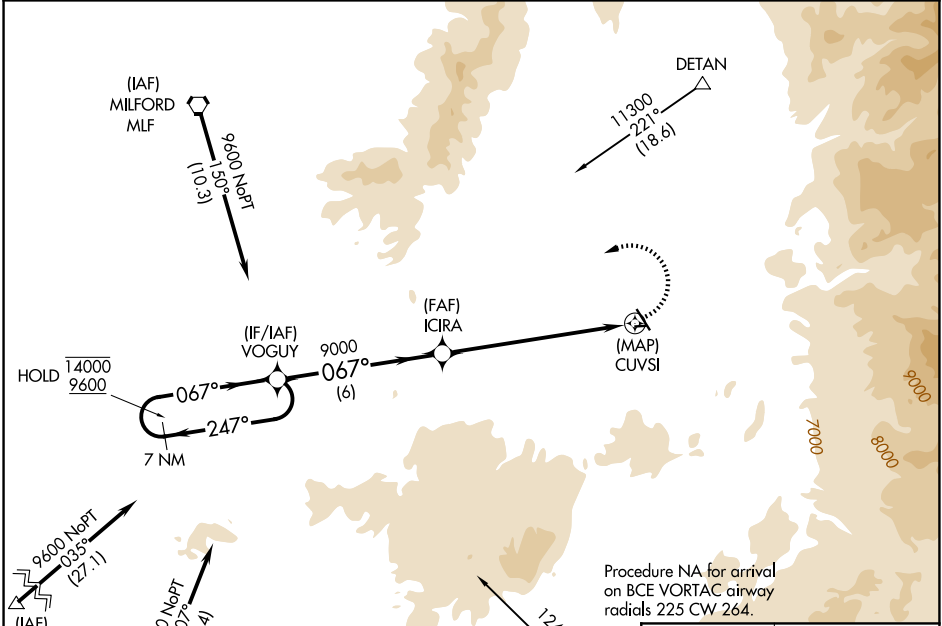
BEAVER MUNI (U52)

RNP APCH.

**▼** **▲** Circling Rwy 7, 25, 31 NA at night. Circling NA for Cat C southwest of Rwy 13-31.

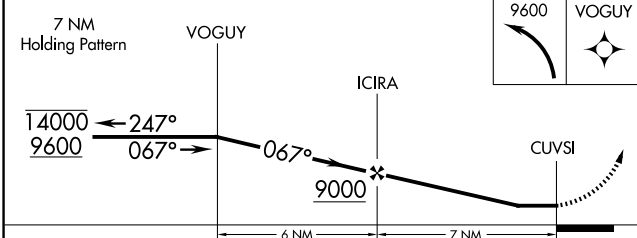
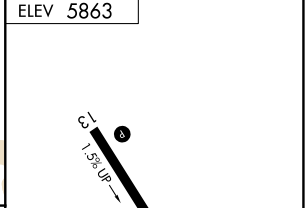
MISSED APPROACH: Climbing left turn to 9600 direct VOGUY and hold.

AWOS-3PT <b>119.925</b>	SALT LAKE CITY CENTER <b>125.575 379.275</b>	CTAF <b>122.9</b>
----------------------------	---	----------------------



Procedure NA for arrivals at BERYL on V293 westbound.

Procedure NA for arrival on BCE VORTAC airway radials 225 CW 264.



CATEGORY	A	B	C	D
CIRCLING	7080-1¼ 1217 (1300-1¼)	7080-1½ 1217 (1300-1½)	7580-3 1717 (1800-3)	NA

ELEV 5863

MIRL Rwy 13-31

REIL Rwy 13 and 31

SW-4, 25 DEC 2025 to 22 JAN 2026

SW-4, 25 DEC 2025 to 22 JAN 2026