

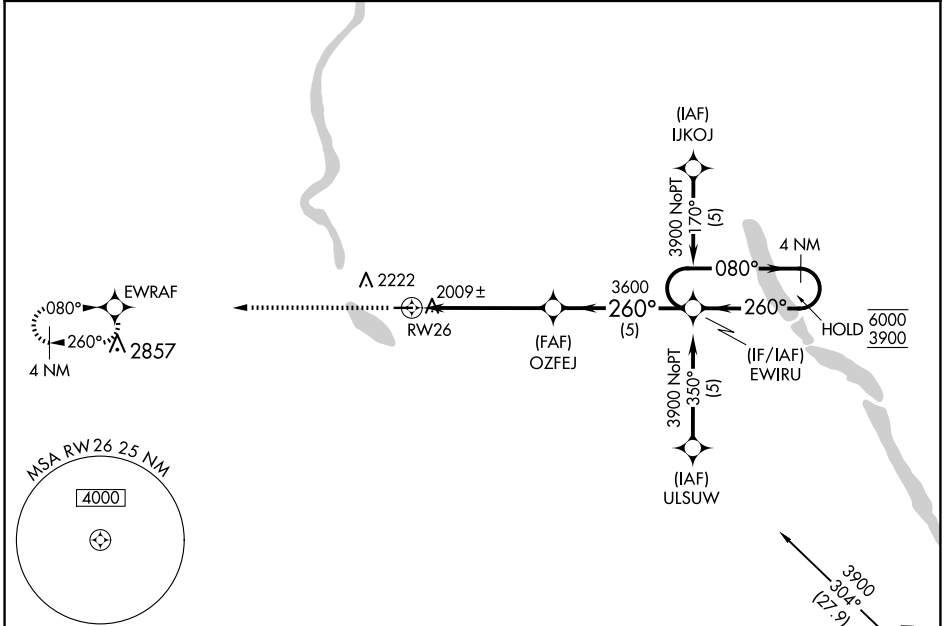
APP CRS 260°	Rwy Idg 3700
	TDZE 1960
	Apt Elev 1962

RNAV (GPS) RWY 26

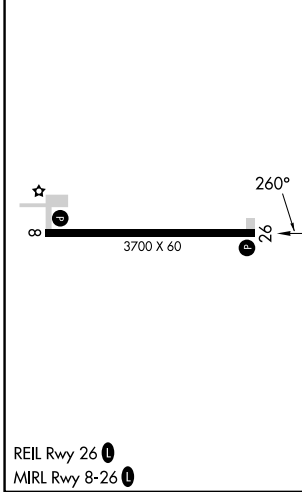
KENMARE MUNI (7K5)

RNP APCH.	Procedure NA at night. Use Minot Intl altimeter setting.	MISSED APPROACH: Climb to 4000 direct EWRAF and hold.
-----------	---	---

MOT ASOS 118.725	MINOT APP CON* 119.6 363.8	UNICOM 122.8 (CTAF) 0
----------------------------	--------------------------------------	---------------------------------



ELEV 1962	TDZE 1960
-----------	-----------



4000	EWRAF	VGSIs and descent angles not coincident (VGSIs Angle 3.00/TCH 30).		
		OZFEJ	EWIRU	
			4 NM Holding Pattern	
			6000 3900	
			080° → ← 260°	
			5.1 NM 5 NM	
CATEGORY	A	B	C	D
LNAV MDA	2420-1	460 (500-1)	NA	
CIRCLING	2660-1¼ 698 (700-1¼)	2660-1½ 698 (700-1½)	NA	

NC-1, 25 DEC 2025 to 22 JAN 2026

NC-1, 25 DEC 2025 to 22 JAN 2026