

(GULKA1.GULKA) 25331

AL-10059 (FAA)

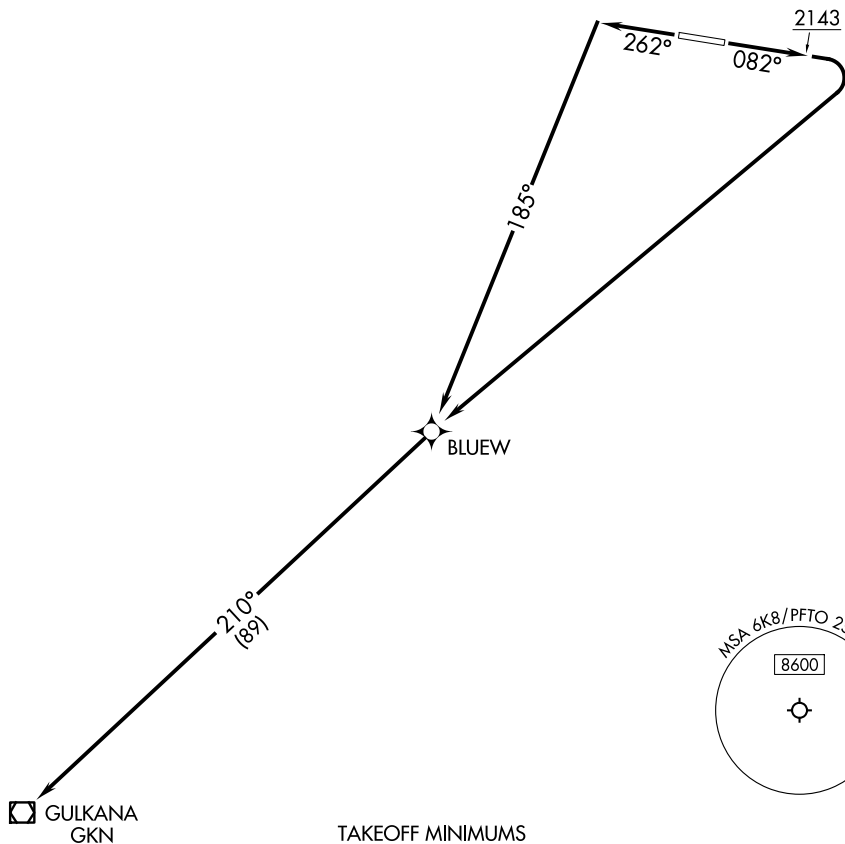
TOK JUNCTION (6K8)(PFTO)
TOK, ALASKA

GULKANA ONE DEPARTURE (RNAV)

ANCHORAGE CENTER
126.55 323.0
AWOS-3P
118.1
NORTHWAY RADIO
122.4

RNAV 1 - GPS.

**TOP ALTITUDE:
ASSIGNED BY ATC**



TAKEOFF MINIMUMS

Rwy 8: Standard with a minimum climb of 291'/NM to 8500.
Rwy 26: Standard with a minimum climb of 295'/NM to 8500.

NOTE: Chart not to scale.



DEPARTURE ROUTE DESCRIPTION

TAKEOFF RUNWAY 8: Climb on heading 082° to 2143, then right turn direct BLUEW, thence

TAKEOFF RUNWAY 26: Climb on heading 262° to intercept course 185° to BLUEW, thence

. . . then on track 210° to GKN VOR/DME, then on assigned route. Maintain ATC assigned altitude, expect assigned altitude 10 min after departure.

GULKANA ONE DEPARTURE (RNAV)

(GULKA1.GULKA) 27NOV25

TOK, ALASKA
TOK JUNCTION (6K8)(PFTO)

AK, 27 NOV 2025 to 22 JAN 2026

AK, 27 NOV 2025 to 22 JAN 2026