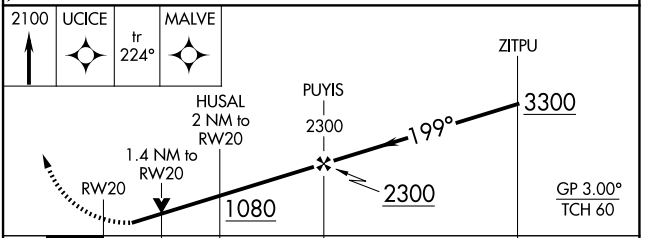
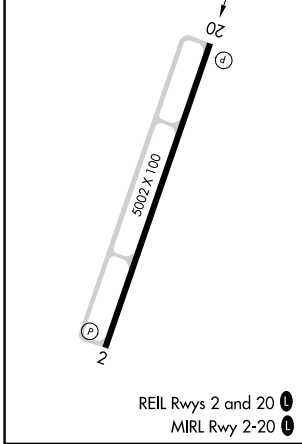
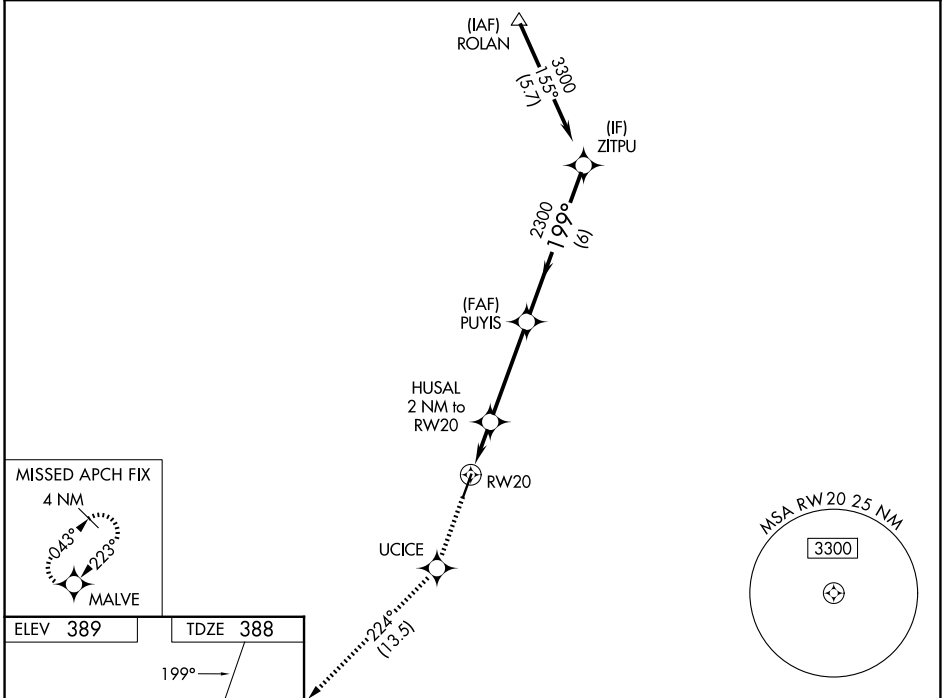


WAAS CH 40309 W20A	APP CRS 199°	Rwy Ldg 5002 TDZE 388 Apt Elev 389
--	------------------------	---

RNAV (GPS) RWY 20

SALINE COUNTY RGNL (SUZ)

RNP APCH - GPS.		MISSED APPROACH: Climb to 2100 direct UCICE and on track 224° to MALVE and hold.
<p>⚠ Rwy 20 helicopter visibility reduction below 3/4 SM NA. For uncompensated Baro-VNAV systems, LNAV/VNAV NA below -15°C and above 54°C.</p>		
AWOS-3 132.125	LITTLE ROCK APP CON 119.5 306.2	UNICOM 122.8 (CTAF) 0



UCICE	tr 224°	MALVE	ZITPU		
HUSAL 2 NM to RW20		PUYIS 2300	3300		
RW20		1.4 NM to RW20	199°		
1.4 NM		0.6 NM	3.8 NM		
CATEGORY		A	B	C	D
LPV DA	642-3/4		254 (300-3/4)		
LNAV/VNAV DA	850-1 3/8		462 (500-1 3/8)		
LNAV MDA	900-1	512 (600-1)	900-1 3/8	512 (600-1 3/8)	
CIRCLING	980-1 591 (600-1)	1080-1 691 (700-1)	1200-2 1/2 811 (900-2 1/2)	1200-2 3/4 811 (900-2 3/4)	

SC-1, 25 DEC 2025 to 22 JAN 2026

SC-1, 25 DEC 2025 to 22 JAN 2026