

SAVANNAH/HILTON HEAD INTL (SAV)(KSAV) P (ANG) 7 NW UTC-5(-4DT) N32°07.66'

ATLANTA

W81°12.13'

H-9B, 12G, L-24H

50 B TPA—See Remarks LRA Class I, ARFF Index C NOTAM FILE SAV

IAP, AD

RWY 10-28: H9351X150 (CONC-GRVD) S-75, D-190, 2S-175,
2D-310 PCR 576 R/B/W/T HIRL CLRWY 10: MALSR. TDZL. PAPI(P4L)—GA 3.0° TCH 69'. RVR-TM
0.5% up.

RWY 28: REIL. PAPI(P4L)—GA 3.0° TCH 66'. RVR-MR

RWY 01-19: H7002X150 (CONC-GRVD) S-75, D-190, 2S-175,
2D-310 PCR 567 R/B/W/T HIRL

RWY 01: PAPI(P4L)—GA 3.0° TCH 74'. RVR-TM

RWY 19: REIL. VASI(V4R)—GA 3.0° TCH 52'. RVR-MR

LAND AND HOLD—SHORT OPERATIONS

| LDG RWY | HOLD—SHORT POINT | AVBL LDG DIST |
|---------|------------------|---------------|
| RWY 01 | 10-28 | 4050 |
| RWY 10 | 01-19 | 5450 |
| RWY 28 | 01-19 | 3250 |

RUNWAY DECLARED DISTANCE INFORMATION

| | | | |
|-------------------|-----------|-----------|----------|
| RWY 01: TORA-7002 | TODA-7002 | ASDA-7002 | LDA-7002 |
| RWY 10: TORA-9351 | TODA-9351 | ASDA-9351 | LDA-9351 |
| RWY 19: TORA-7002 | TODA-7002 | ASDA-7002 | LDA-7002 |
| RWY 28: TORA-9351 | TODA-9351 | ASDA-9351 | LDA-9351 |

ARRESTING GEAR/SYSTEM

RWY 10 BAK-12 BAK 14M(B) (1500FT).

BAK-12 BAK 14M(B) (1977 FT). RWY 28

SERVICE: S4 FUEL 100LL, JET A, A+, A++ OX 1, 2, 3, 4 LGT When ATCT clsd actvt MALSR Rwy 10; REIL Rws 19 and 28; HIRL Rws 01-19 and 10-28—CTAF. VASI Rwy 19 and PAPI Rws 01, 10 and 28 oper continuously. MALSR Rwy 10 nstd spacing. **MILITARY—A-GEAR** BAK-12A cable raised by BAK-14 device O/R to Twr. BAK-12B cable raised by BAK-14M device O/R to Twr. **FUEL A, A+** (Avbl 1100-0300Z‡ C912-964-1557, OT 2 hr PN, C912-313-6310. Svc fee.) A++, A++100(M/L), (NC-100LL) **TRAN ALERT** Tran acct prohibited when tran alert unavbl. Fleet svc unavbl.

AIRPORT REMARKS: Attended 1100-0300Z‡. Birds and deer on and in/ov arpt. Pilots conducting EFVS ops; be aware LED ALS in use Rwy 10. Fuel: A+: avbl 1100-0300Z‡ C912-964-1557, OT 2 hr PN, C912-313-6310. Svc fee. Air carrier acct ctc gnd prior to push back from all gates. Pilots should complete all calculations prior to push back fm trml gate. No 180° turns on asph for acct over 12,500 lbs gross. Rwy 01-19 ctr 75' keel section of rwy conc full length, last 500' conc, full width, both ends. All twy int conc exc Twy B at the North end of the rwy and Twy B2. Remainder of Rwy 01-19 asph. Rwy 10-28 ctr 75' keel section conc full length, all twy int conc exc Twy C2 and C3. Remainder of Rwy 10-28 asph. Twy B2, Twy C2 are ltd to 12,500 lbs. Twy A, Twy B, Twy C, Twy D, Twy E, Twy F, Twy G and Twy H are ltd to dual wheel acct up to 173,000 lbs and dual tandem wheel acct up to 310,000 lbs. Twy E clsd from Rwy 28 to but not incld Twy E2 to acct with wingspan of 175' or greater. Twy E2 connector clsd to acct ldg Rwy 28. Distance from touchdown too short for safe turn. Actv/vehicles on the south end of Twy A and the east end of Twy E not visible from the ATCT. TPA—Mil jet overhds 2000'. PPR for access of gen avn acct on the acr trml ramp ctc 912-964-7501. Rwy 01 no RVR when twr clsd. Rwy 10 no RVR when twr clsd. Rwy 19 no RVR when twr clsd. Rwy 28 no RVR when twr clsd. Flight Notification Service (ADCUS) avbl. Opr transponders with alt reptng mode and ADS-B (if equipped) enabled on all airport surfaces. Airport CLSD to intl GA arr exc 24hr PPR ctc US Cust 912-210-0348 or 912-232-7507 and servicing fixed base opr for processing and instructions.

MILITARY REMARKS: ANG BASH phase II 01 Apr-31 Oct. Ctc twr or comd post for bird haz. Wildlife most active +/-1 hr of SS or SR. Combat readiness trng cntr (CRTC)/Air Dominance Center (ADC) Aflid mgmt DSN 860-3145/3497 C912-963-3145/3497. Duty hr 1230-2100Z‡ Mon-Fri. Ctc ADC Base Ops on UHF 237.00 (call sign "ADC Ops"). Mil E2 taxilane. 165AW (C130 Unit) aflid mgmt DSN 860-8184/8433, C912-966-8184. Duty hr 1230-2100Z‡ Mon-Thur, 1230-1900Z‡ Fri. Acft inbd to 165AW ctc Comd Post DSN 860-8244, C912-966-8244 or UHF 225.75 within 50 NM with ETA and req. ADC comsec storage unavbl. 165AW comsec storage up to secret avbl via comd post dur normal duty hr only.

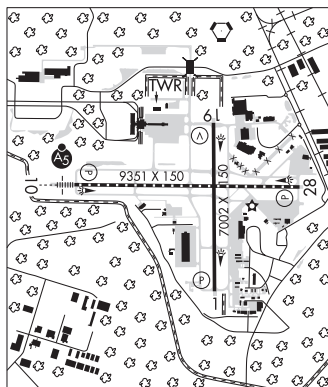
AIRPORT MANAGER: 912-964-0514**WEATHER DATA SOURCES:** ASOS (912) 226-2578 LAWRS. LLWAS.**COMMUNICATIONS:** CTAF 125.975 ATIS 123.75 UNICOM 122.95

RCO 122.5 (MACON RADIO)

Ⓡ APP/DEP CON 118.4 270°-010° 120.4 110°-269° 125.3 11°-109° (1100-0500Z‡)

Ⓡ JACKSONVILLE CENTER APP/DEP CON 132.925 11°-109° (0500-1100Z‡)

TOWER 125.975 (1100-0500Z‡) GND CON 121.9 CLNC DEL 119.55

CLEARANCE DELIVERY PHONE: For CD if una to ctc on FSS freq, ctc Savannah Apch at 912-964-3205, when Apch clsd ctc Jacksonville ARTCC at 904-845-1592.

CONTINUED ON NEXT PAGE

CONTINUED FROM PRECEDING PAGE

AIRSPACE: CLASS C svc ctc APP CON svc 1100-0500Z† other times CLASS E.

RADIO AIDS TO NAVIGATION: NOTAM FILE SAV.

(VH) (H) VORTACW 115.95 SAV Chan 106(Y) N32°08.78' W81°11.95' 194° 1.1 NM to fld. 22/6W.

DME unusable:

085°-100° byd 39 NM blo 3,000'

126°-132° byd 33 NM blo 3,000'

342°-343° byd 30 NM

TACAN AZIMUTH unusable:

248°-251° byd 31 NM blo 3,000'

342°-343° byd 30 NM

VOR unusable:

042°-047° blo 3,000'

075°-089° byd 40 NM

098°-108° byd 40 NM

126°-130° byd 40 NM

271°-281° byd 40 NM

ILS 111.9 I-TPV Rwy 01. Class IA. LOC unusable byd 25° left and right of course. Unmonitored when ATCT clsd.

ILS/DME 111.35 I-SAV Chan 50(Y) Rwy 10. Class IE. Unmonitored when ATCT clsd.

SOPERTON

TREUTLEN CO (4J8) 2 E UTC-5(-4DT) N32°23.24' W82°33.80'

ATLANTA

345 NOTAM FILE MCN

L-24H

RWY 16-34: H3000X50 (ASPH)

RWY 16: Trees.

RWY 34: Trees.

AIRPORT REMARKS: Unattended.

AIRPORT MANAGER: 912-529-3664

COMMUNICATIONS: CTAF 122.9

CLEARANCE DELIVERY PHONE: For CD ctc Jacksonville ARTCC at 904-845-1592.

RADIO AIDS TO NAVIGATION: NOTAM FILE MCN.

DUBLIN (VL) (L) VORTAC 113.1 DBN Chan 78 N32°33.81' W82°49.80' 133° 17.2 NM to fld. 306/5W.

VOR unusable:

013°-038° byd 40 NM

040°-080°

102°-113° byd 40 NM

117°-129° byd 40 NM

153°-163° byd 40 NM blo 3,000'

153°-163° byd 80 NM

175°-189° byd 40 NM

274°-280° byd 40 NM

281°-291°

292°-308° byd 40 NM

309°-319° byd 40 NM blo 3,000'

309°-319° byd 80 NM

320°-332° byd 40 NM

343°-000° byd 40 NM blo 3,000'

343°-000° byd 52 NM

SOUTHWEST GEORGIA RGNL (See ALBANY on page 193)

SPENCE (See MOULTRIE on page 240)