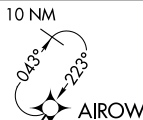


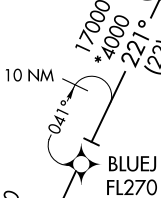
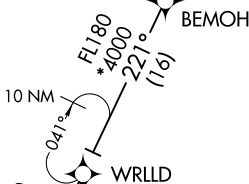
CHSLY SIX ARRIVAL (RNAV) Transition Routes

CHARLOTTE APP CON
126.15 282.325
D-ATIS ARR
121.15

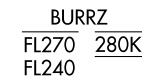
RNAV 1 - DME/DME/IRU or GPS.
RADAR required.



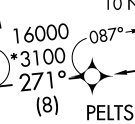
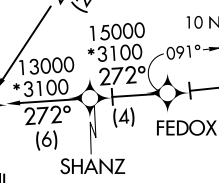
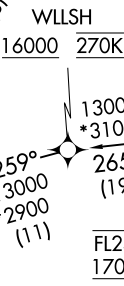
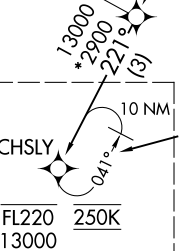
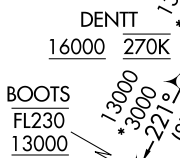
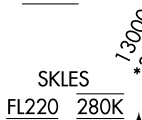
USE CAUTION: Parachute jumping 3 NM south SLPOH, 5 NM radius KRUQ, AOB 14,500 MSL (SR-SS).



AIROW TRANSITION (AIROW.CHSLY6)
COUPN TRANSITION (COUPN.CHSLY6)
NUUMN TRANSITION (NUUMN.CHSLY6)
SDAIL TRANSITION (SDAIL.CHSLY6)



NOTE: Jet aircraft only.
NOTE: Landing south use Rwy 18L transition, landing north use Rwy 36R transition. Expect runway assignment from CLT approach.
NOTE: Jet aircraft descend via Mach number until 280K, if unable, advise ATC.
NOTE: Do not file NUUMN Transition - to be assigned by ATC.



See following page for Arrival Routes.

(CONTINUED ON FOLLOWING PAGE)

NOTE: Chart not to scale.

SE-2, 22 JAN 2026 to 19 FEB 2026

SE-2, 22 JAN 2026 to 19 FEB 2026