

# KNIGHTS THREE DEPARTURE

**TOP ALTITUDE:  
4000**

RADAR and DME required.

D-ATIS DEP  
132.1  
CLNC DEL  
127.15 348.6  
CPDLC  
GND CON  
121.8 348.6 (WEST)  
121.9 348.6 (EAST)  
CHARLOTTE TOWER  
118.1 257.8 (Rwy 18L-36R)  
126.4 257.8 (Rwy 18C-36C)  
133.35 257.8 (Rwy 18R-36L)

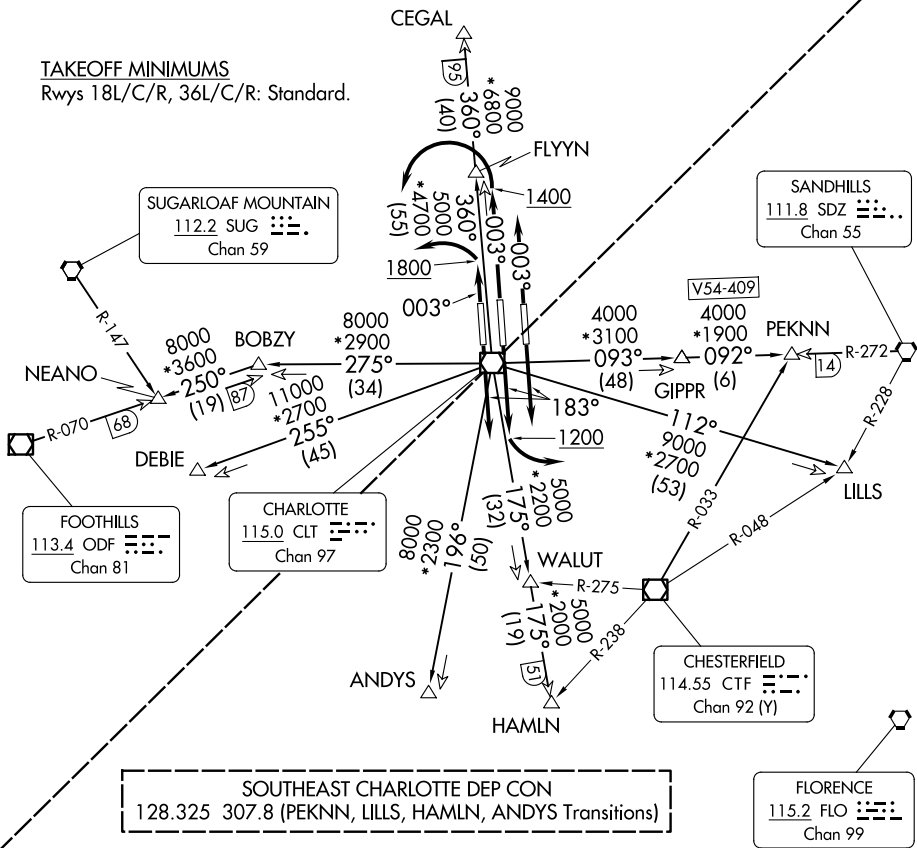
**NORTHWEST CHARLOTTE DEP CON**

120.05 257.2 (DEBIE, NEANO Transitions)  
120.05 257.2 (FLYYN, CEGAL Transitions Rwys 18L/C/R)  
120.5 257.2 (FLYYN, CEGAL Transitions Rwys 36L/C/R)

**TAKEOFF MINIMUMS**  
Rwys 18L/C/R, 36L/C/R: Standard.

SE-2, 22 JAN 2026 to 19 FEB 2026

SE-2, 22 JAN 2026 to 19 FEB 2026



(CONTINUED ON FOLLOWING PAGE)

NOTE: Chart not to scale.

# KNIGHTS THREE DEPARTURE