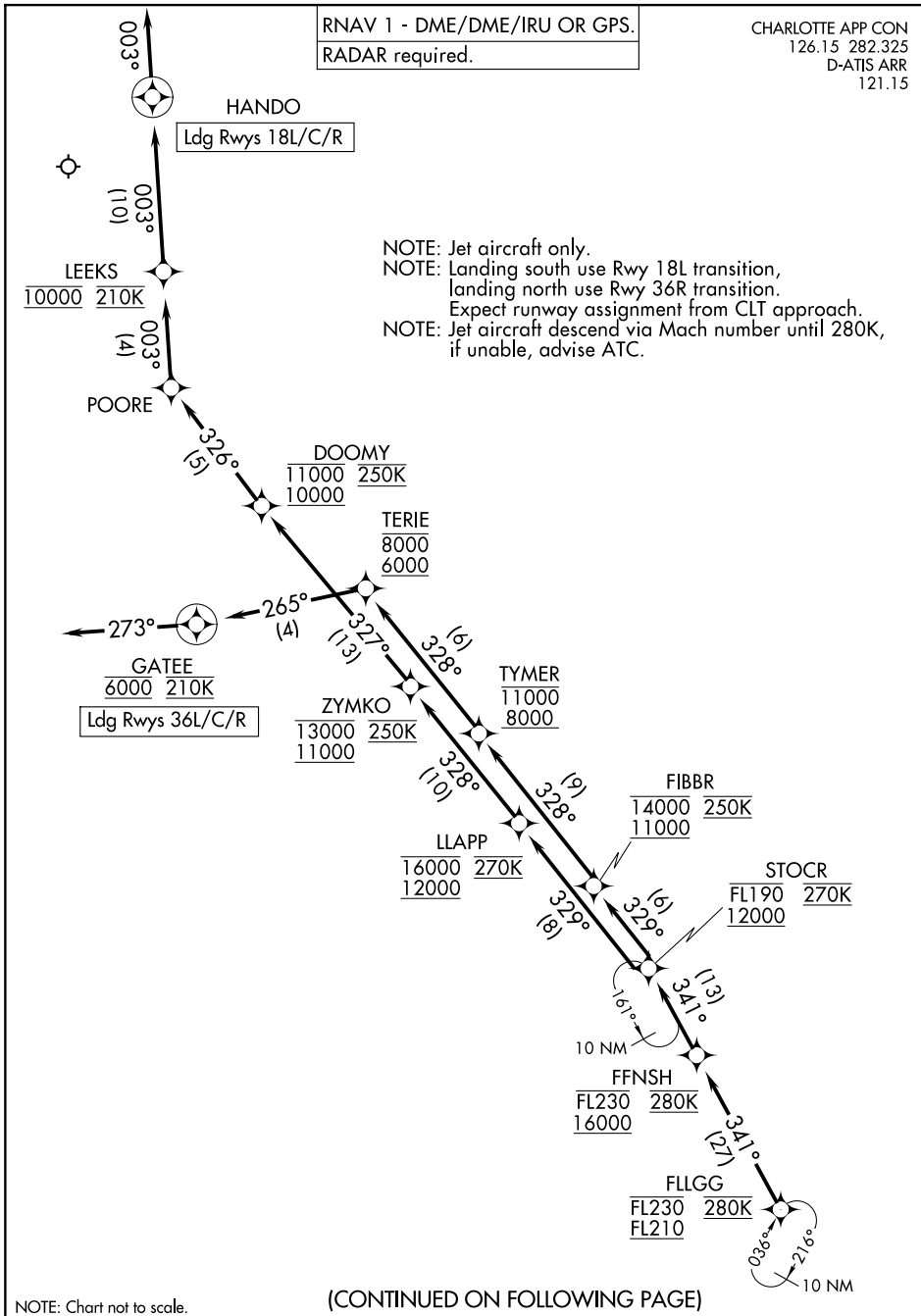


STOCR FOUR ARRIVAL (RNAV) Arrival Routes

RNAV 1 - DME/DME/IRU OR GPS.
RADAR required.

CHARLOTTE APP CON
126.15 282.325
D-ATIS ARR
121.15

NOTE: Jet aircraft only.
NOTE: Landing south use Rwy 18L transition,
landing north use Rwy 36R transition.
Expect runway assignment from CLT approach.
NOTE: Jet aircraft descend via Mach number until 280K,
if unable, advise ATC.



SE-2, 22 JAN 2026 to 19 FEB 2026

SE-2, 22 JAN 2026 to 19 FEB 2026

NOTE: Chart not to scale.

(CONTINUED ON FOLLOWING PAGE)

STOCR FOUR ARRIVAL (RNAV) Arrival Routes