

(KAYLN3.KAYLN) 24137

KAYLN THREE DEPARTURE (RNAV)

AL-119 (FAA)

DETROIT METRO WAYNE COUNTY (DTW)

DETROIT, MICHIGAN

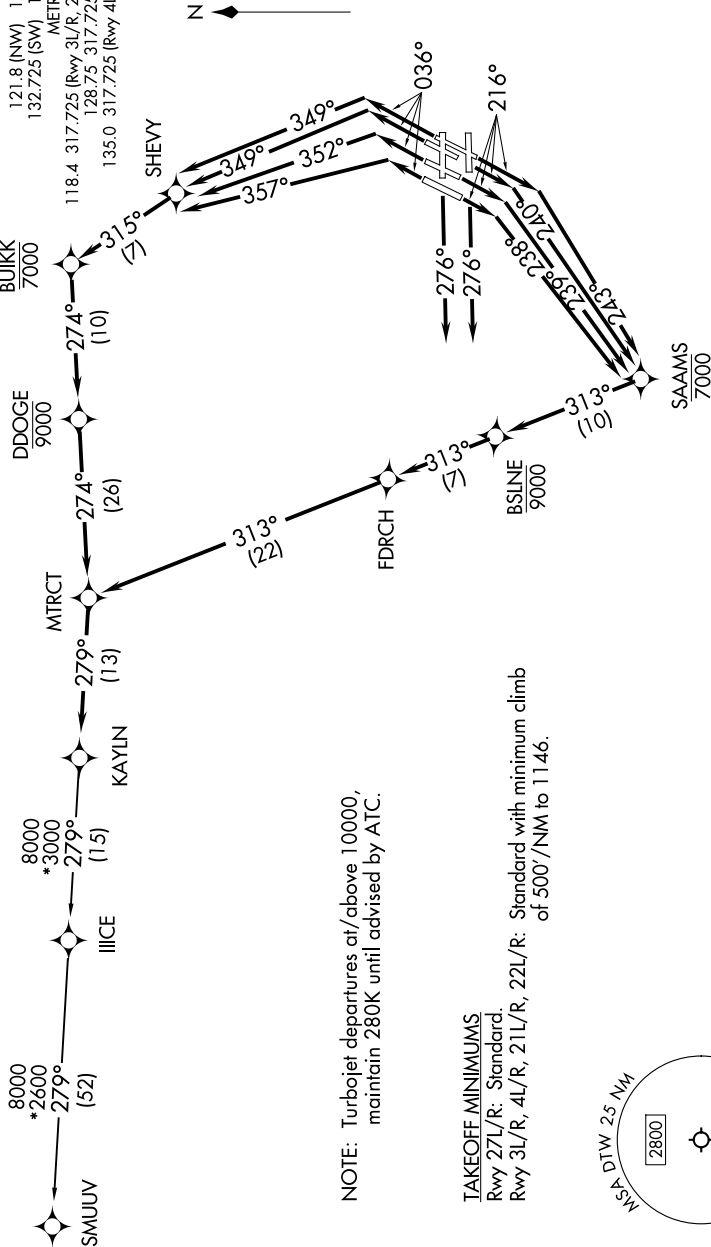
EC-1, 22 JAN 2026 to 19 FEB 2026

DETROIT DEP CON
125.525 284.0
D-ATIS 118.125
CLNC DEL 120.65
CPDLC

GND CON
121.8 (NW) 119.45 (NE)
132.725 (SW) 119.25 (SE)
METRO TOWER
118.4 317.725 (Rwy 3L/R, 21L/R, 27R)
128.75 317.725 (Rwy 27L)
135.0 317.725 (Rwy 4L/R, 22L/R)

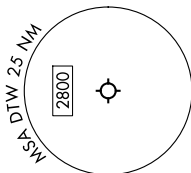
RNAV 1 - DME/DME/IRU or GPS.
RADAR required.

TOP ALTITUDE:
17000



NOTE: Turbojet departures at/above 10000, maintain 280K until advised by ATC.

TAKEOFF MINIMUMS
Rwy 27L/R: Standard.
Rwy 3L/R, 4L/R, 21L/R, 22L/R: Standard with minimum climb of 500'/NM to 1146.



(CONTINUED ON FOLLOWING PAGE)

NOTE: Chart not to scale.

EC-1, 22 JAN 2026 to 19 FEB 2026

KAYLN THREE DEPARTURE (RNAV)

(KAYLN3.KAYLN) 16MAY24

DETROIT, MICHIGAN

DETROIT METRO WAYNE COUNTY (DTW)