

DETROIT, MICHIGAN

AL-119 (FAA)

RNAV (GPS) PRM Y RWY 4L (CLOSE PARALLEL)

DETROIT METRO WAYNE COUNTY (DTW)

WAAS CH 82439 W04A	APP CRS 038°	Rwy Ldg TDZE 645 Apt Elev 645
--	------------------------	---

RNP APCH.

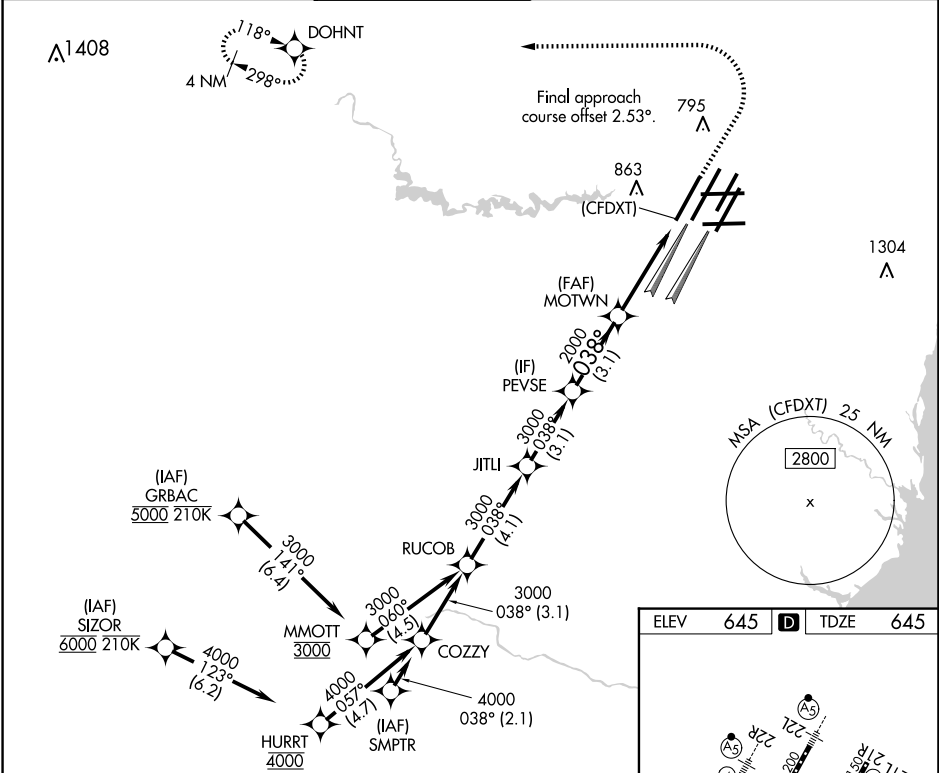
▼ Rwy 4L and 4R separated by 3000 feet centerline to centerline. For uncompensated Baro-VNAV systems, LNAV/VNAV NA below -19°C or above 54°C. Simultaneous approach authorized. Use of FD or AP required during simultaneous operations. Dual VHF comm required. See additional requirements on AAUP.

ALSF-2



MISSED APPROACH:
Climb to 1100 then
climbing left turn to 4000
direct DOHNT and hold.

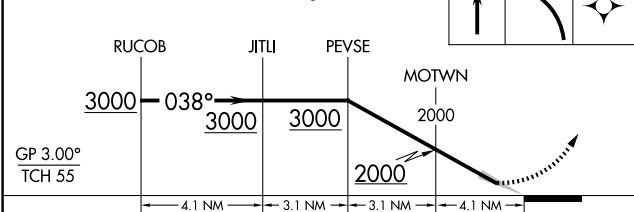
D-ATIS 133.675	DETROIT APP CON 124.05 284.0	METRO TOWER 135.0 317.725 PRM 127.05	GND CON 121.8 (NW) 132.725 (SW)	VOR 119.45 (NE) 119.25 (SE)	CLNC DEL 120.65	CPDLC
--------------------------	--	--	---	---	---------------------------	-------



EC-1, 22 JAN 2026 to 19 FEB 2026

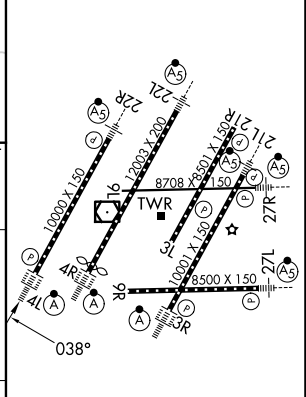
EC-1, 22 JAN 2026 to 19 FEB 2026

VGSI and RNAV glidepath not coincident (VGSI Angle 3.00/TCH 71).



GP 3.00° TCH 55	4.1 NM	3.1 NM	3.1 NM	4.1 NM
CATEGORY	A	B	C	D
LPV DA		895/24	250 (300-½)	
LNAV/VNAV DA		1068/45	423 (500-¾)	

ELEV 645	D	TDZE 645
----------	----------	----------



TDZ/CL Rws 3R, 4L, 4R and 22R
REL Rws 3L, 9L, 9R, and 21R
HIRL all runways

DETROIT, MICHIGAN

42°13'N-83°21'W

DETROIT METRO WAYNE COUNTY (DTW)

Orig-B 07SEP23

RNAV (GPS) PRM Y RWY 4L (CLOSE PARALLEL)