

LOC/DME I-TSL 111.1 Chan 48	APP CRS 273°	Rwy Ldg TDZE Apt Elev 13000 651 680
--	------------------------	---

ILS RWY 28R (SA CAT I)

CHICAGO O'HARE INTL (ORD)

From VOGLR: RNAV 1-GPS required.
Aircraft not GPS equipped - RADAR required for procedure entry.
DME or RADAR required.

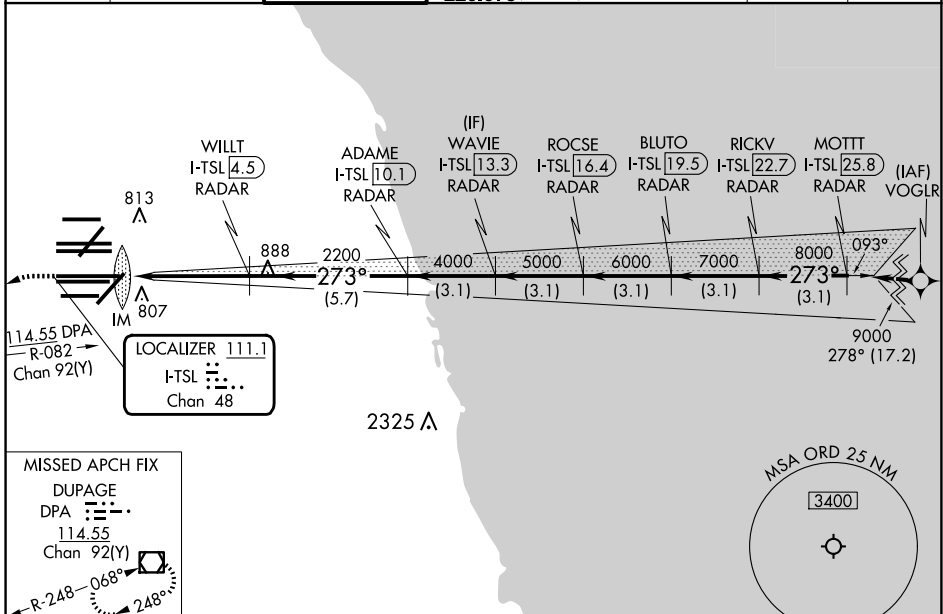
ALSF-2



MISSED APPROACH: Climb to 1100 then climbing
left turn to 4000 on heading 215° and DPA
VOR/DME R-082 to DPA VOR/DME and hold.

Simultaneous approach authorized. Requires specific OPSPEC,
MSPEC, or LOA approval and use of HUD to DH.

D-ATIS 135.4 282.225	CHICAGO APP CON 119.0 292.125	O'HARE TOWER 132.7 348.0	GND CON (TWR CENTER) 124.125 (TWR NORTH) 118.05 (TWR SOUTH) 226.675 (ALL TWRs)	(TWR CENTER) (OBND) 121.75 (OBND) 121.9 (IBND)	CLNC DEL 121.6	CPDLC
--	---	------------------------------------	--	--	--------------------------	-------



EC-3, 22 JAN 2026 to 19 FEB 2026

EC-3, 22 JAN 2026 to 19 FEB 2026

MISSED APCH FIX

DUPAGE
DPA 114.55
Chan 92(Y)

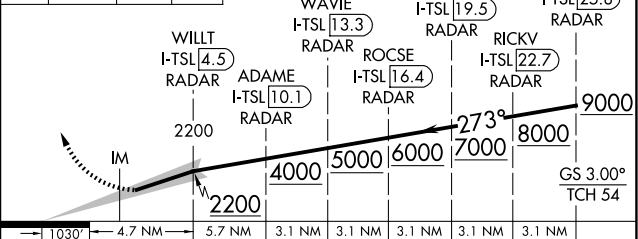
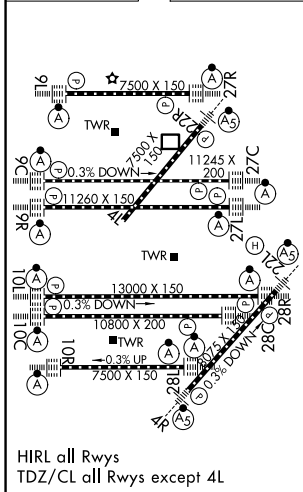
R-248-068°
248°

ELEV 680	D	TDZE 651
----------	----------	----------

1100 4000 DPA VGSi and ILS glidepath not coincident (VGSi Angle 3.00/TCH 70).

↑ hdg. 215°

R-082



CATEGORY	A	B	C	D
S-ILS 28R	RA 161/14 150 DA 801			

SA CATEGORY I ILS - SPECIAL AIRCREW & AIRCRAFT CERTIFICATION REQUIRED