

LOC/DME I-OYG 111.9 Chan 56	APP CRS 093°	Rwy Ldg 11245 TDZE 673 Apt Elev 680
---	------------------------	--

ILS RWY 9C (SA CAT I)
CHICAGO O'HARE INTL (ORD)

DME or RADAR required. From GIBNS: RNAV 1-GPS required. Aircraft not GPS equipped - RADAR required for procedure entry.

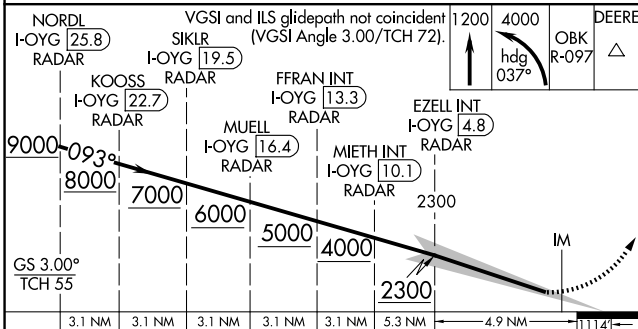
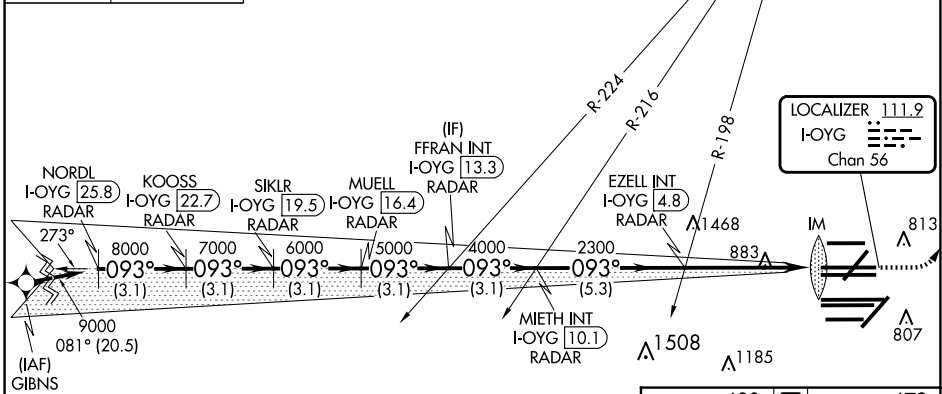
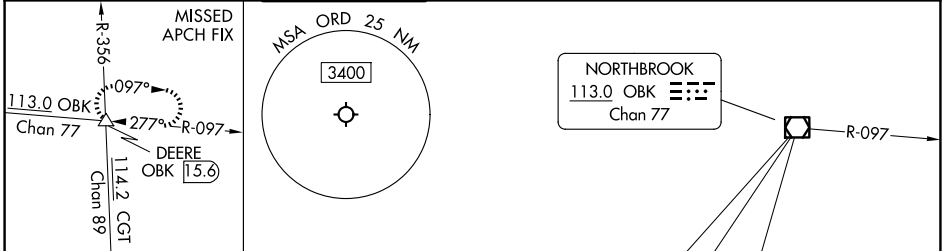
ALSIF-2

MISSED APPROACH: Climb to 1200 then climbing left turn to 4000 on heading 037° and OBK VOR/DME R-097 to DEERE INT/ OBK 15.6 DME and hold.

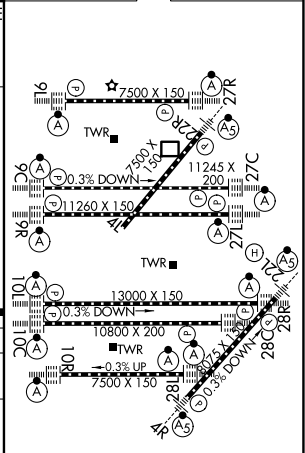


Simultaneous approach authorized. Requires specific OPSPEC, MSPEC or LOA approval.

D-ATIS 135.4 282.225	CHICAGO APP CON 119.0 292.125	O'HARE TOWER 121.15 348.0	124.125 118.05 226.675 GND CON (TWR NORTH) (TWR SOUTH) (ALL TWRs)	(TWR CENTER) 121.75 (OBND) 121.9 (IBND)	CLNC DEL 121.6	CPDLC
--	--	--	---	---	--------------------------	-------



ELEV 680	TDZE 673
----------	----------



CATEGORY	A	B	C	D
S-ILS 9C	RA 154/14 150 DA 823			

SA CATEGORY I ILS - SPECIAL AIRCREW & AIRCRAFT CERTIFICATION REQUIRED

HIRL all Rwys
TDZ/CL all Rwys except 4L