


NDB RWY 24

LAKEHURST MAXFIELD FLD,  
(JOINT BASE MC GUIRE DIX LAKEHURST) (KNEL)

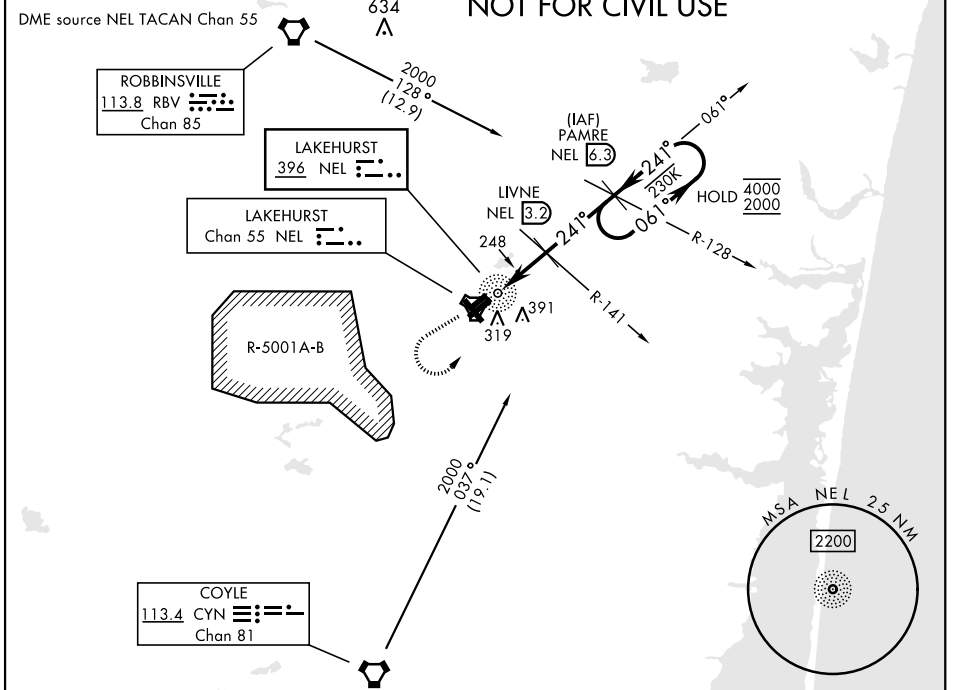
NDB NEL <b>396</b>	APCH CRS <b>241°</b>	Rwy Idg <b>5002</b>
		TDZE <b>101</b>
		Arpt Elev <b>101</b>

[USN]

MISSED APPROACH: Climb to 800, then climbing left turn to 2000 and intercept NEL NDB 061° bearing to PAMRE and hold, continue climb in hold to 2000.

<p>▼ * When ALS inop, increase, CAT AB vis to 1 mile, CAT CD vis to 1¼ miles.</p>	<p>MALSR <b>A5</b></p> 		
<p>ATIS ★ <b>276.525</b></p>	<p>MC GUIRE APP CON <b>126.475 363.8</b></p>	<p>TOWER ★ <b>127.775 360.2</b></p>	<p>GND CON <b>118.375 307.375</b></p>

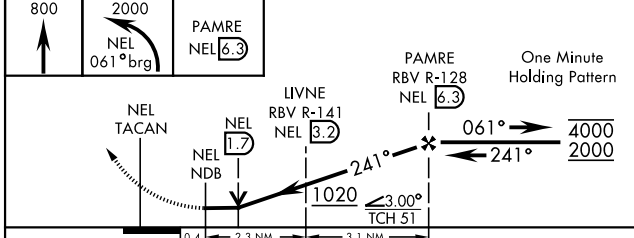
NOT FOR CIVIL USE



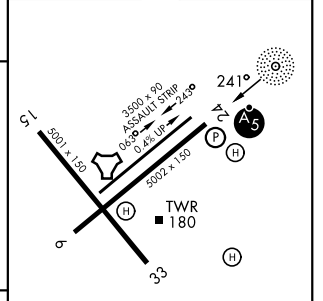
NE-2, 22 JAN 2026 to 19 FEB 2026

NE-2, 22 JAN 2026 to 19 FEB 2026

EMERG SAFE ALT 100 NM 4000



ELEV	101	TDZE	101
------	-----	------	-----



CATEGORY	A	B	C	D
S-24 *	540-¾	439	(500-¾)	
CIRCLING	660-1 559 (600-1)	720-1 619 (700-1)	720-1¼ 619 (700-1¼)	720-2 619 (700-2)

HIRL Rwy 6-24 MIRL Rwy 063°-243°					
FAF to MAP 5.4 NM					
Knots	60	90	120	150	180
Min:Sec	5:24	3:36	2:42	2:10	1:48