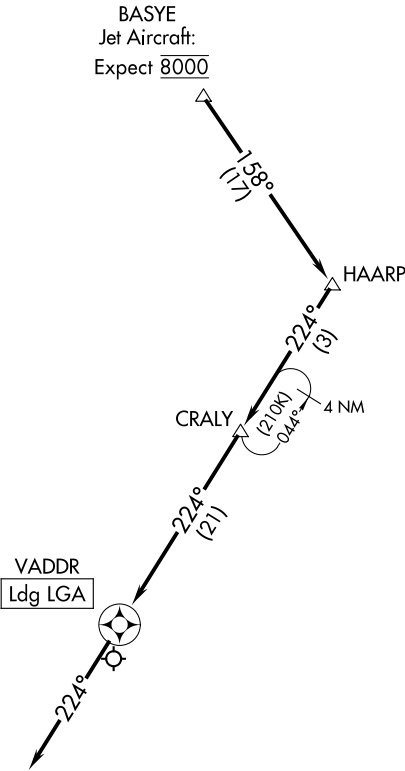


|  |                              |
|--|------------------------------|
| NEW YORK APP CON<br>120.8 257.65<br>D-ATIS ARR<br>125.95 | RNAV 1 - DME/DME/IRU or GPS. |
|  | RADAR required.              |



NOTE: STAR applicable to aircraft capable of operating at 250K or greater.

NOTE: VAAPE transition, ATC assigned only.

NOTE: Chart not to scale.

ARRIVAL ROUTE DESCRIPTION

From BASYE on track 158° to HAARP, then on track 224° to CRALY, then on track 224° to VADDR, then on track 224°. Expect RADAR vectors to final approach course.