

OKLAHOMA CITY, OKLAHOMA

# RNAV (GPS) RWY 36

APCH CRS <b>356°</b>	Rwy Idg <b>11,100</b>
	TDZE <b>1291</b>
	Arprt Elev <b>1291</b>

(USAF)

TINKER AFB (KTIK)

**▼** \* Cat E Circling not authorized in sector S of Rwy 13-31 and W of Rwy 18-36.

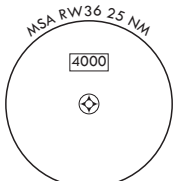
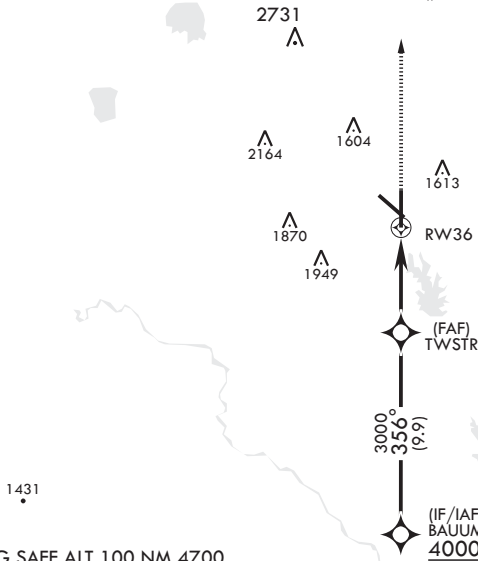


**MISSED APPROACH:** Climb to 4000 direct OZZZ waypoint and hold.

ATIS ★ <b>270.1</b>	OKE CITY APP CON/DEP CON <b>124.2 336.4</b>	TOWER <b>124.45 251.05</b>	GND CON <b>121.8 275.8</b>	CLNC DEL <b>119.7 335.8</b>	ASR
------------------------	--	-------------------------------	-------------------------------	--------------------------------	-----

DME/DME RNP-0.3 NA

For uncompensated Baro-VNAV systems, LNAV/VNAV NA below -17°C (2°F)



EMERG SAFE ALT 100 NM 4700

BAUUM 4000 GP 3.00° TCH 50	VGSI and descent angles not coincident.		4000	OZZZ	ELEV 1291	TDZE 1291
			3000	1.3 NM to RWY36		
CATEGORY	A	B	C	D	E	
LNAV/VNAV DA	1739/53		448	(500-1)		
LNAV MDA	1740/24	449 (500-½)	1740/45	449	(500-¾)	
CIRCLING*	1820-1 529 (600-1)		2000-2 709 (800-2)	2040-2½ 749 (800-2½)	2040-2¾ 749 (800-2¾)	

HIRL all rwys

OKLAHOMA CITY, OKLAHOMA  
Amdt 1 13JUN24

35°25'N - 97°23'W

TINKER AFB (KTIK)

# RNAV (GPS) RWY 36

SC-1, 22 JAN 2026 to 19 FEB 2026

SC-1, 22 JAN 2026 to 19 FEB 2026