

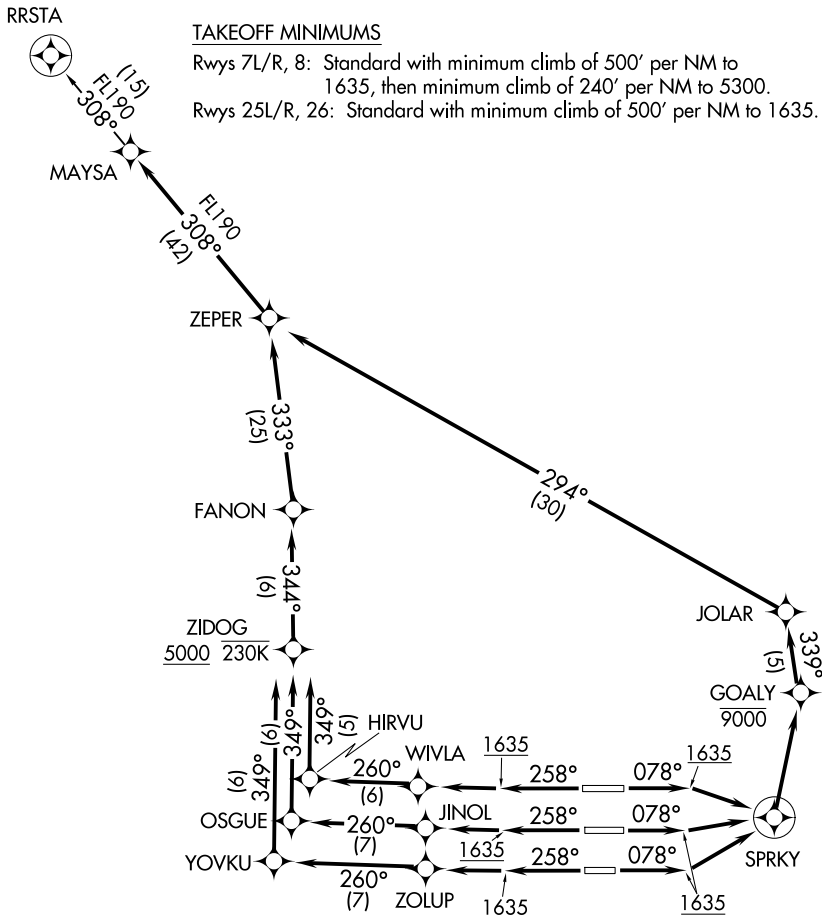
D-ATIS  
127.575  
CLNC DEL  
118.1 269.2  
CPDLC  
GND CON  
119.75 269.2 (NORTH)  
132.55 269.2 (SOUTH)  
PHOENIX TOWER  
118.7 278.8 (Rwy 8-26)  
120.9 254.3 (Rwys 7L-25R, 7R-25L)  
PHOENIX DEP CON  
119.2 281.45

**TOP ALTITUDE:  
8000**

- NOTE: RNAV 1.
- NOTE: Turbojets and turboprops only.
- NOTE: RADAR required.
- NOTE: DME/DME/IRU or GPS required.

TAKEOFF MINIMUMS

Rwys 7L/R, 8: Standard with minimum climb of 500' per NM to 1635, then minimum climb of 240' per NM to 5300.  
 Rwys 25L/R, 26: Standard with minimum climb of 500' per NM to 1635.



NOTE: Chart not to scale.

(NARRATIVE ON FOLLOWING PAGE)

SW-4, 22 JAN 2026 to 19 FEB 2026

SW-4, 22 JAN 2026 to 19 FEB 2026