

| | | | |
|--|------------------------|-----------------------------|---|
| WAAS CH 53514 W11A | APP CRS 108° | Rwy Ldg TDZE Apt Elev | 7006 3068 3082 |
|--|------------------------|-----------------------------|---|

RNAV (GPS) RWY 11

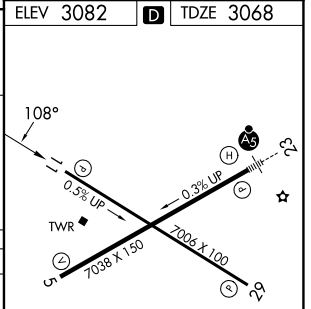
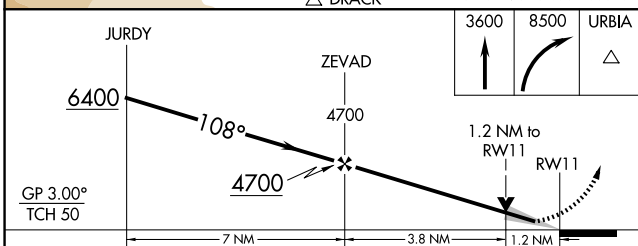
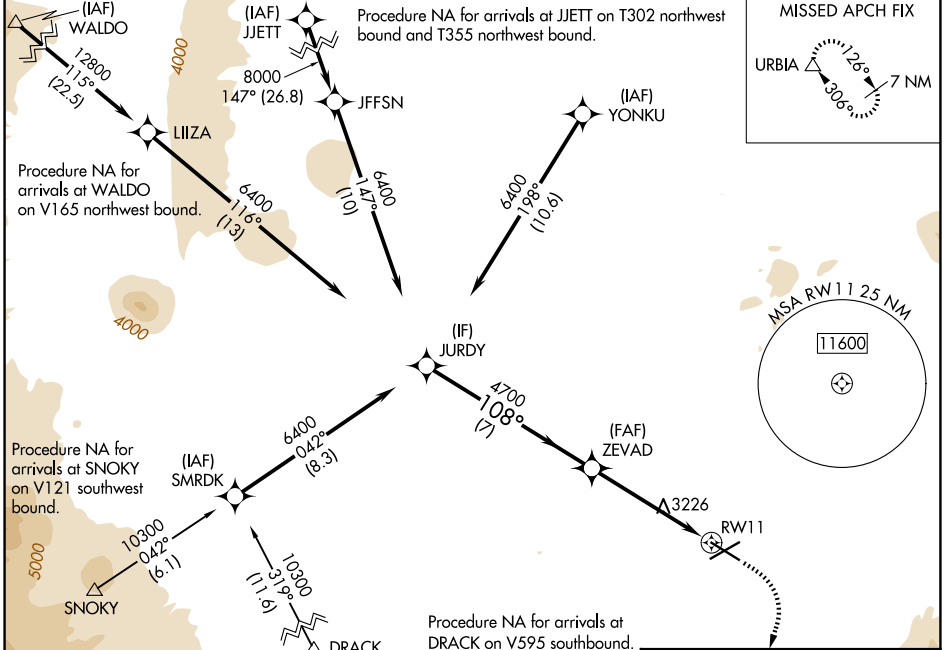
ROBERTS FLD (RDM)

RNP APCH - GPS.

⚠ For uncompensated Baro-VNAV systems, LNAV/VNAV NA below -16°C or above 54°C. Baro-VNAV and VDP NA when using BDN altimeter setting. When local altimeter setting not received, use BDN altimeter setting and increase LPV DA to 3349 feet and all visibilities 1/8 SM. Increase LNAV/VNAV DA to 3451 feet and all visibilities 1/4 SM. Increase all MDAs 100 feet and LNAV visibility Cat C/D 1/4 SM, and Circling visibility Cat C/D 1/4 SM.

MISSED APPROACH: Climb to 3600 then climbing right turn to 8500 direct URBIA and hold, continue climb-in-hold to 8500.

| | | | | |
|------------------------|---|--|-------------------------|-------------------------|
| ATIS 119.025 | SEATTLE CENTER 126.15 269.475 | REDMOND TOWER* 124.5 (CTAF) 256.8 | GND CON 121.8 | UNICOM 122.95 |
|------------------------|---|--|-------------------------|-------------------------|



| CATEGORY | A | B | C | D |
|--------------|-----------------------|-----------------------|-------------------------------|-------------------------------|
| LPV DA | 3268-3/4 | | 200 (200-3/4) | |
| LNAV/VNAV DA | 3370-7/8 | | 302 (300-7/8) | |
| LNAV MDA | 3480-1 | 412 (400-1) | 3480-1 1/8 | 412 (400-1 1/8) |
| CIRCLING | 3540-1 458 (500-1) | 3560-1 478 (500-1) | 3640-1 1/2 558 (600-1 1/2) | 3760-2 1/4 678 (700-2 1/4) |

REIL Rwy 5, 11, and 29

HIRL Rwy 5-23

MIRL Rwy 11-29

NW-1, 22 JAN 2026 to 19 FEB 2026

NW-1, 22 JAN 2026 to 19 FEB 2026