

VORTAC SAV <b>115.95</b> Chan <b>106</b> (Y)	APP CRS <b>181°</b>	Rwy Ldg TDZE Apt Elev	<b>7002</b> <b>47</b> <b>50</b>
--	------------------------	-----------------------------	---------------------------------------

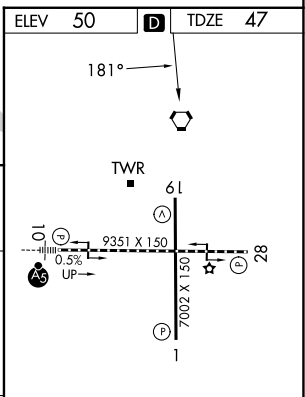
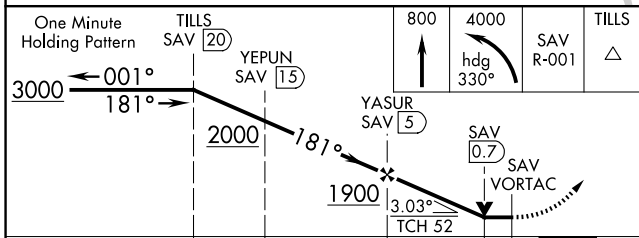
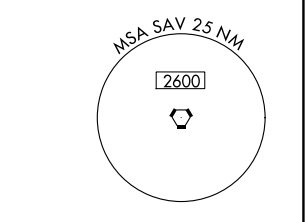
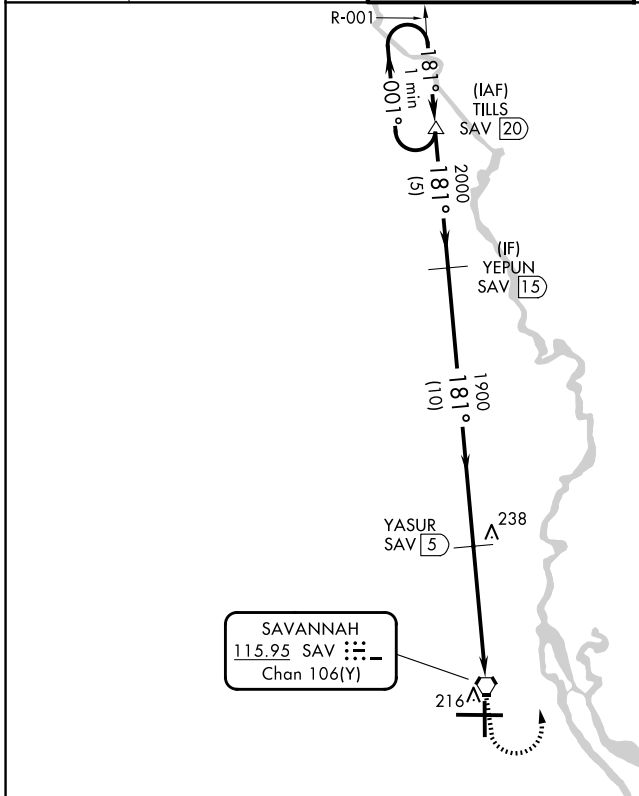
# VOR/DME or TACAN RWY 19

SAVANNAH/HILTON HEAD INTL (SAV)

▼ Visibility reduction by helicopters NA. When local altimeter setting not received, use Hilton Head Island altimeter setting and increase all MDA 80 feet; increase S-19 Cats C/D visibility ¼ SM and Cat E visibility ½ SM; increase Circling Cats C/D visibility ¼ SM. VDP NA when using Hilton Head Island altimeter setting.

MISSED APPROACH: Climb to 800 then climbing left turn to 4000 via heading 330° and SAV R-001 to TILLS/20 DME and hold.

ATIS <b>123.75</b>	SAVANNAH APP CON* <b>125.3 371.875</b>	SAVANNAH TOWER* <b>125.975</b> (CTAF) <b>257.8</b>	GND CON <b>121.9 348.6</b>	UNICOM <b>122.95</b>
-----------------------	---	---	-------------------------------	-------------------------



CATEGORY	A	B	C	D	E
S-19	500-1	453 (500-1)	500-1¼ 453 (500-1¼)	500-1½	453 (500-1½)
CIRCLING	520-1	470 (500-1)	740-2 690 (700-2)	740-2¼ 690 (700-2¼)	900-3 850 (900-3)

TDZL/RCLS Rwy 10  
REIL Rws 19 and 28  
HIRL Rws 1-19 and 10-28

SE-4, 22 JAN 2026 to 19 FEB 2026

SE-4, 22 JAN 2026 to 19 FEB 2026