

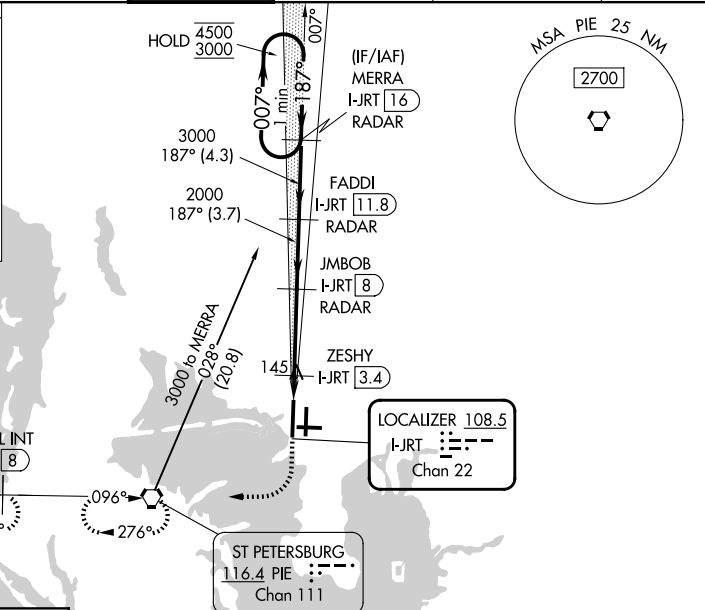
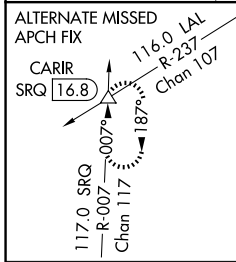
LOC/DME I-JRT <b>108.5</b> Chan <b>22</b>	APP CRS <b>187°</b>	Rwy Ldg <b>11002</b> TDZE <b>21</b> Apt Elev <b>26</b>
---	------------------------	--

# ILS or LOC RWY 19R

TAMPA INTL (TPA)

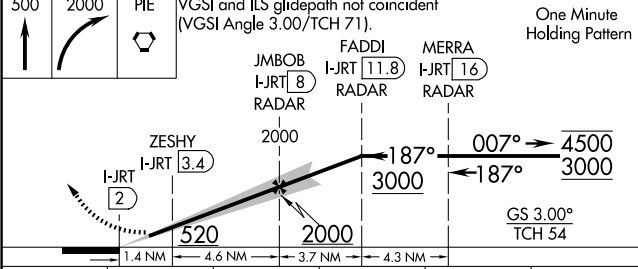
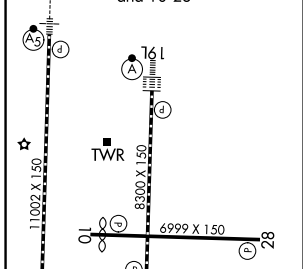
DME or RADAR required.		MALS R 	MISSED APPROACH: Climb to 500 then climbing right turn to 2000 direct PIE VORTAC and hold, continue climb-in-hold 2000. (TACAN aircraft climb to 500 then climbing right turn to 2000 direct PIE VORTAC then on PIE VORTAC R-276 to LAFAL INT/PIE 8 DME and hold W, RT, 096° inbound.)
⚠ Simultaneous approach authorized. For inop ALS, increase S-ILS 19R Cat E visibility to RVR 4000 and S-LOC 19R Cats C/D/E visibility to RVR 5500. *RVR 1800 authorized with use of FD or AP or HUD to DA.			

ARR <b>126.45</b>	D-ATIS <b>128.475</b>	DEP <b>118.5</b>	TAMPA APP CON <b>307.175</b>	TAMPA TOWER <b>119.5</b>	GND CON <b>269.4</b>	CLNC DEL <b>133.6</b>	CPDLC
-------------------	-----------------------	------------------	------------------------------	--------------------------	----------------------	-----------------------	-------



ELEV <b>26</b>	<b>D</b>	TDZE <b>21</b>
----------------	----------	----------------

REIL Rwy 1R  
TDZ/CL Rws 1L and 19L  
HIRL Rws 1L-19R, 1R-19L, and 10-28



FAF to MAP 6 NM					
Knots	60	90	120	150	180
Min:Sec	6:00	4:00	3:00	2:24	2:00
CATEGORY	A	B	C	D	E
S-ILS 19R*	221/24 200 (200-½)				
S-LOC 19R	400/24 379 (400-½)		400/35 379 (400-⅝)		
CIRCLING	600-1 574 (600-1)		680-1¾ 654 (700-1¾)		980-3 954 (1000-3)

SE-3, 22 JAN 2026 to 19 FEB 2026

SE-3, 22 JAN 2026 to 19 FEB 2026