

DOVER, DELAWARE

RNAV (GPS) RWY 32

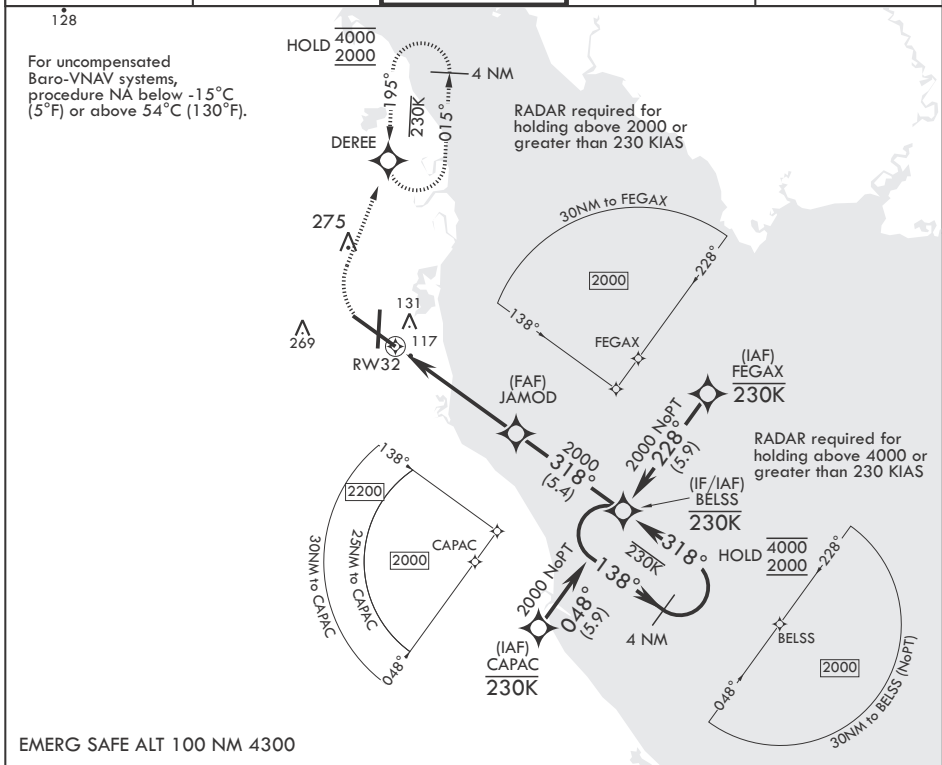
WAAS CH 91360 W32A	APCH CRS 318°	Rwy ldg TDZE Arpt Elev	12,903 26 29
--------------------------	------------------	------------------------------	--------------------

(USAF)

DOVER AFB (KDOV)

RNP APCH-GPS MISSED APPROACH: (Do not exceed 230 KIAS) Climb to 600 then climbing right turn to 2000 direct DEREÉ and hold.

ATIS 127.825 273.5	APP CON 132.425 257.875	TOWER 126.35 279.625	GND CON 118.875 225.4	CLNC DEL 125.55 289.4
-----------------------	----------------------------	-------------------------	--------------------------	--------------------------



600 crs 318°

2000 DEREÉ

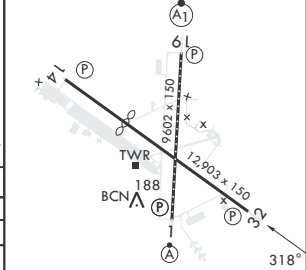
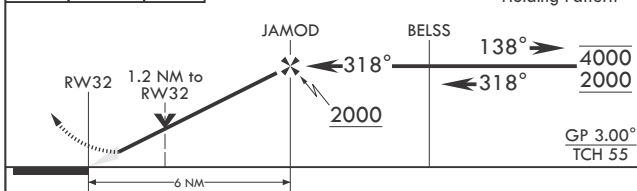
VGSI and RNAV glidepath not coincident (VGSI Angle 2.93/TCH 69).

4 NM Holding Pattern

ELEV 29

Rwy 14 ldg 8652'

TDZE 26



CATEGORY	A	B	C	D
LPV DA	226-¾	200	(200-¾)	
LNAV/VNAV DA	277-¾ 251 (300-¾)	316-⅞ 290 (300-⅞)	326-⅞ 300 (300-⅞)	
LNAV MDA	460-1 434 (500-1)	460-1¼ 434 (500-1¼)		
CRCLING	540-1 511 (600-1)	620-1½ 591 (600-1½)	620-2 591 (600-2)	

HIRL all Rwys
REIL Rwy 32
TDZL/CL Rwy 1

DOVER, DELAWARE
Amdt 6 26DEC24

39°08'N - 75°28'W

DOVER AFB (KDOV)

RNAV (GPS) RWY 32

NE-3, 22 JAN 2026 to 19 FEB 2026

NE-3, 22 JAN 2026 to 19 FEB 2026