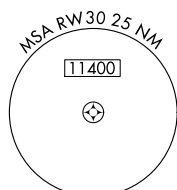
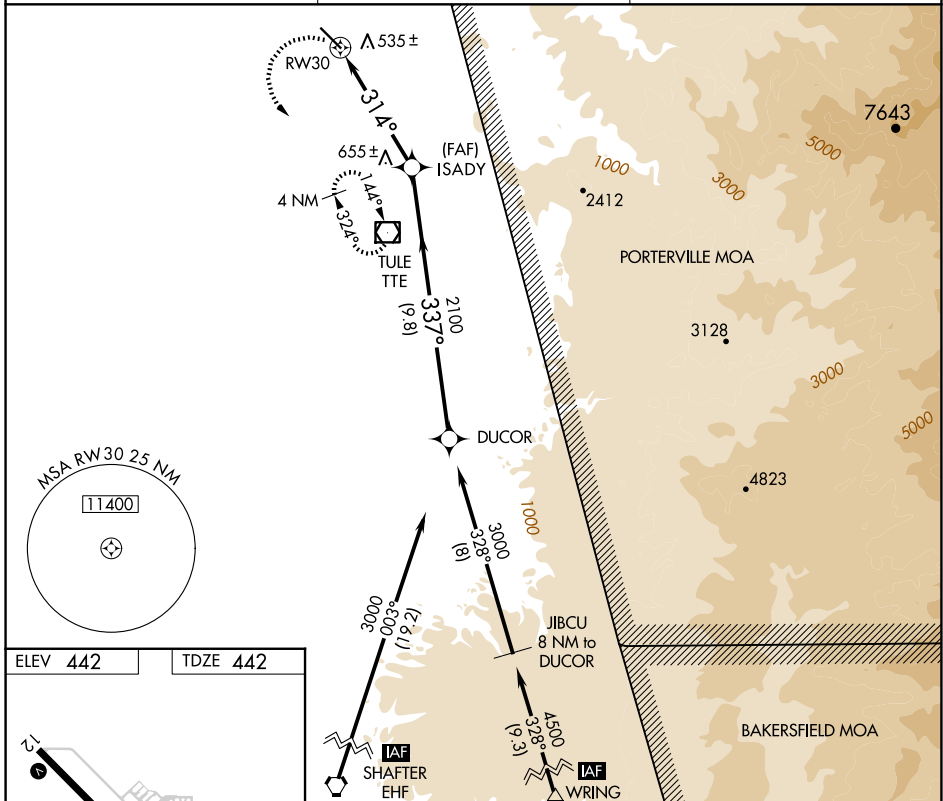


APP CRS **314°**
 Rwy Idg **5960**
 TDZE **442**
 Apt Elev **442**

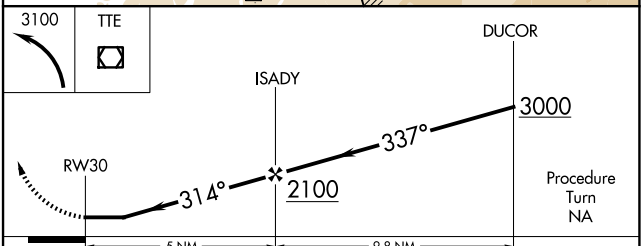
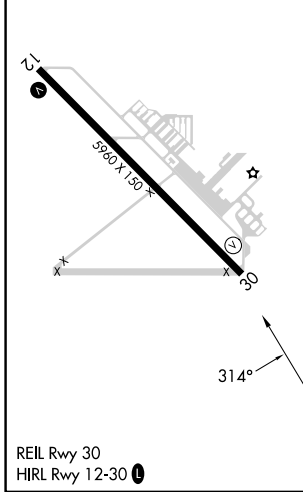
GPS RWY 30
 PORTERVILLE MUNI (P'TV)

IAF ARM APPROACH MODE PRIOR TO IAF.
NA Helicopter visibility reduction below ¾ SM NA. MISSED APPROACH: Climbing left turn to 3100 direct TTE VOR/DME and hold.

AWOS-3PT **134.625** BAKERFIELD APP CON* **119.075** UNICOM **122.8** (CTAF) **0**



ELEV **442** TDZE **442**



CATEGORY	A	B	C	D
S-30	900-1	458 (500-1)	900-1¼ 458 (500-1¼)	900-1½ 458 (500-1½)
CIRCLING	900-1	458 (500-1)	940-1½ 498 (500-1½)	1080-2 638 (700-2)

SW-2, 22 JAN 2026 to 19 FEB 2026

SW-2, 22 JAN 2026 to 19 FEB 2026