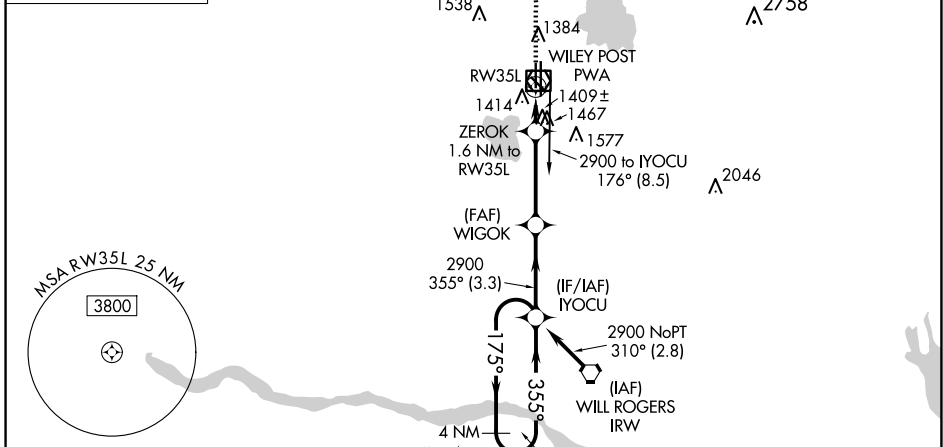
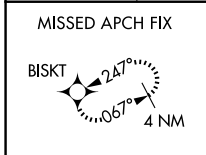


WAAS CH <b>78437</b> <b>W35B</b>	APP CRS <b>355°</b>	Rwy Idg TDZE <b>1277</b> Apt Elev <b>1300</b>
--	------------------------	---

# RNAV (GPS) RWY 35L

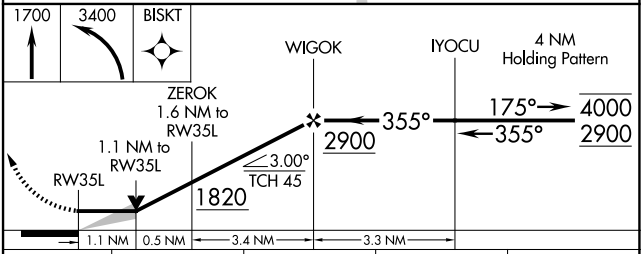
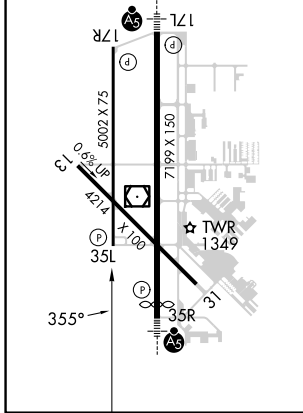
WILEY POST (PWA)

RNP APCH-GPS.		MISSED APPROACH: Climb to 1700 then climbing left turn to 3400 direct BISKT and hold.		
ATIS <b>128.725</b>	OKE CITY APP CON <b>124.6 266.8</b>	WILEY POST TOWER ★ <b>126.9(CTAF) 306.9</b>	GND CON <b>121.7</b>	UNICOM <b>122.95</b>



ELEV 1300	D	TDZE 1277
-----------	---	-----------

REIL Rwy 17R and 35L  
HIRL Rwy 17L-35R  
MIRL Rwy 13-31 and 17R-35L



CATEGORY	A	B	C	D
LP MDA	1660-1	383 (400-1)	1660-1½	383 (400-1½)
LNAV MDA	1720-1	443 (500-1)	1720-1¾	443 (500-1¾)
<input checked="" type="checkbox"/> CIRCLING	1780-1	480 (500-1)	1880-1½ 580 (600-1½)	1880-2 580 (600-2)

SC-1, 22 JAN 2026 to 19 FEB 2026

SC-1, 22 JAN 2026 to 19 FEB 2026