

LOC/DME I-RBD 110.75 Chan 44 (Y)	APP CRS 309°	Rwy Ldg TDZE 660 Apt Elev 661
--	------------------------	---

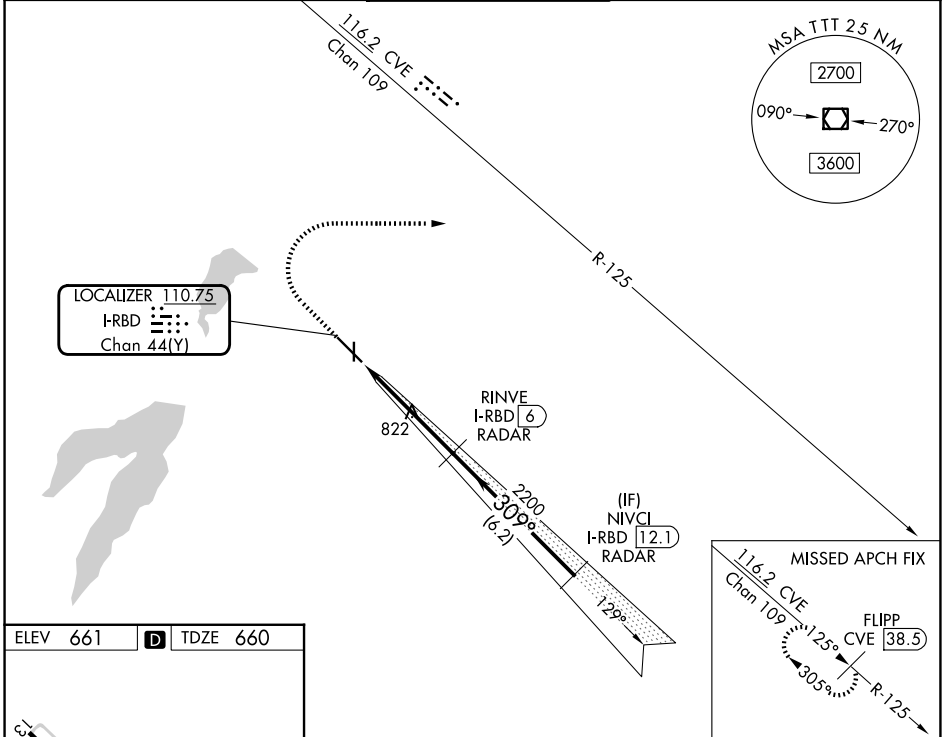
ILS or LOC RWY 31

DALLAS EXEC (R.BD)

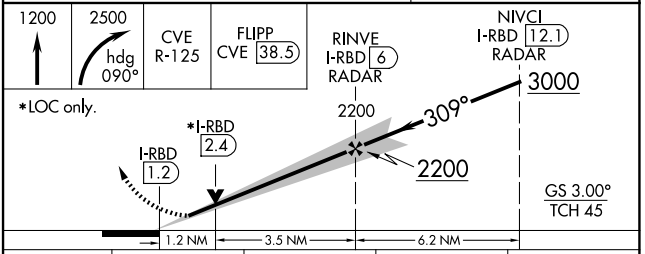
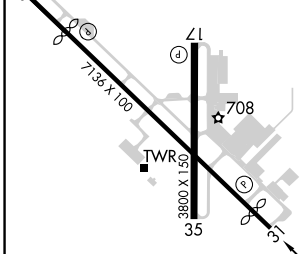
RADAR required for procedure entry,
DME or RADAR required for LOC only.

MISSED APPROACH: Climb to 1200 then climbing
right turn to 2500 on heading 090° and CVE
VOR/DME R-125 to FLIPP/CVE 38.5 DME and hold.

ATIS 126.35	LONE STAR APP CON 125.2 343.65	EXECUTIVE TOWER★ 127.25 (CTAF) 0	GND CON 119.475	UNICOM 122.95
-----------------------	--	---	---------------------------	-------------------------



ELEV 661	D	TDZE 660
----------	----------	----------



REIL Rwy 13, 17, 31 and 35 MIRL Rwy 13-31 and 17-35 0 FAF to MAP 4.7 NM	<table border="1"> <tr> <td>Knots</td> <td>60</td> <td>90</td> <td>120</td> <td>150</td> <td>180</td> </tr> <tr> <td>Min:Sec</td> <td>4:42</td> <td>3:08</td> <td>2:21</td> <td>1:53</td> <td>1:34</td> </tr> </table>				Knots	60	90	120	150	180	Min:Sec	4:42	3:08	2:21	1:53	1:34
Knots	60	90	120	150	180											
Min:Sec	4:42	3:08	2:21	1:53	1:34											
CATEGORY	A	B	C	D												
S-ILS 31	860- ³ / ₄		200 (200- ³ / ₄)													
S-LOC 31	1080-1	420 (500-1)	1080-1 ¹ / ₈	420 (500-1 ¹ / ₈)												
CIRCLING	1160-1 499 (500-1)	1220-1 559 (600-1)	1340-2 679 (700-2)	1400-2 ¹ / ₄ 739 (800-2 ¹ / ₄)												

SC-2, 22 JAN 2026 to 19 FEB 2026

SC-2, 22 JAN 2026 to 19 FEB 2026