

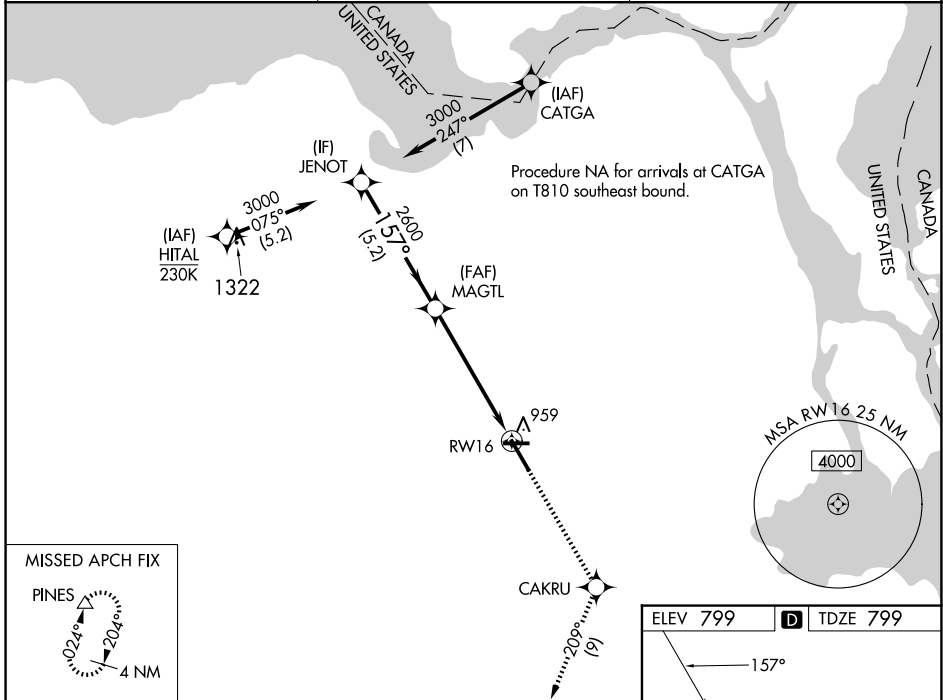
WAAS CH <b>69215</b> <b>W16A</b>	APP CRS <b>157°</b>	Rwy Idg <b>7203</b> TDZE <b>799</b> Apr Elev <b>799</b>
--	------------------------	---

# RNAV (GPS) RWY 16

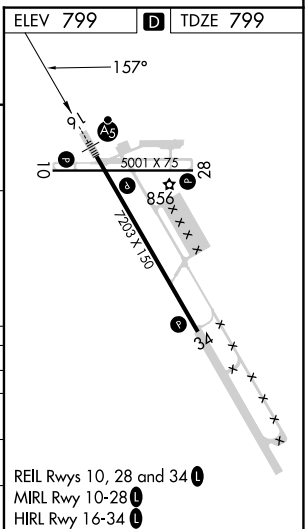
CHIPPEWA COUNTY INTL (CIU)

RNP APCH - GPS.		MALSR	MISSED APPROACH: Climb to 3000 direct CAKRU and on track 209° to PINES and hold.
⚠ For uncompensated Baro-VNAV systems, LNAV/VNAV NA below -16°C or above 54°C. ⚠ For inop ALS, increase LNAV/VNAV all Cats visibility to 1 SM.			

AWOS-3PT <b>127.575</b>	TORONTO CENTER <b>132.65 344.5</b>	UNICOM <b>123.0 (CTAF)</b>
----------------------------	---------------------------------------	-------------------------------



MISSED APCH FIX		PINES	
JENOT 3000 157° GP 3.00° TCH 58 5.2 NM		MAGTL 2600 1.1 NM to RWY 16 4.3 NM 1.1 NM RWY 16	
CATEGORY	A	B	C
LPV DA		999-1/2	200 (200-1/2)
LNAV/VNAV DA		1140-5/8	341 (400-5/8)
LNAV MDA	1220-1/2	421 (500-1/2)	1220-3/4
			421 (500-3/4)
CIRCLING	1260-1	461 (500-1)	1260-1/2
			461 (500-1/2)
			1360-2
			561 (600-2)



EC-1, 22 JAN 2026 to 19 FEB 2026

EC-1, 22 JAN 2026 to 19 FEB 2026