

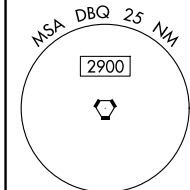
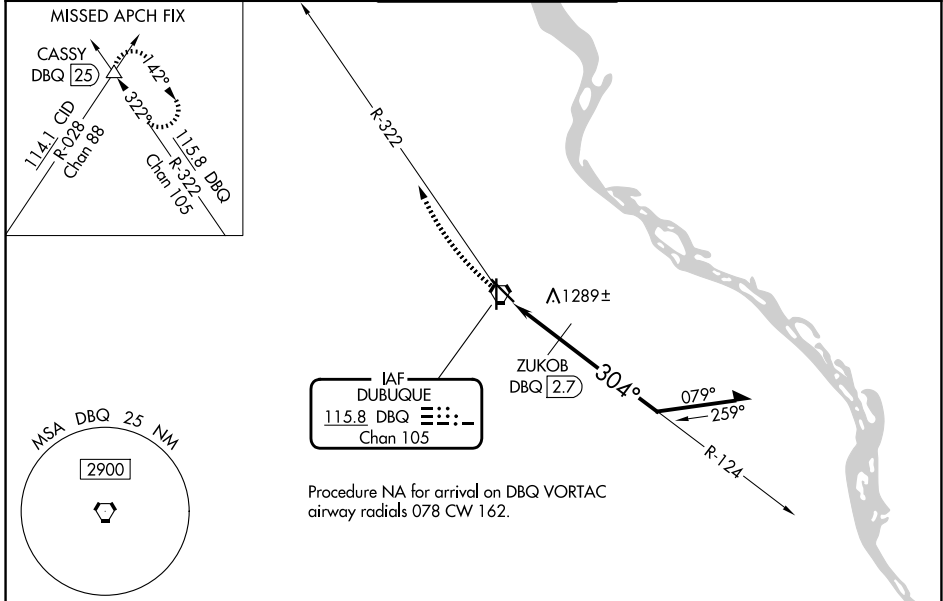
VORTAC DBQ 115.8 Chan 105	APP CRS 304°	Rwy Ldg TDZE Apt Elev 6502 1062 1077
--	------------------------	--

VOR RWY 31

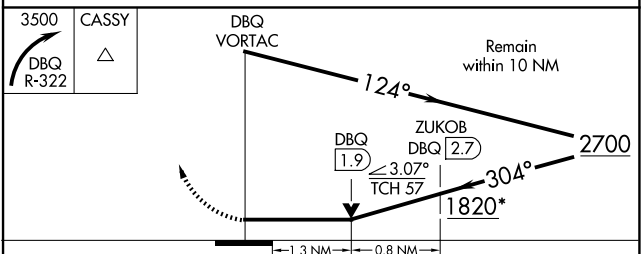
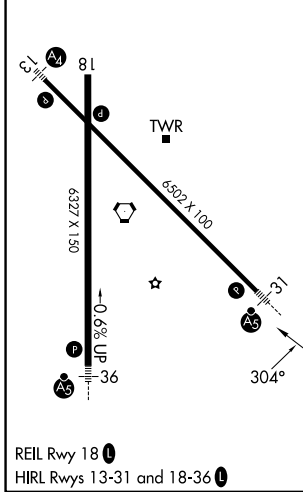
DUBUQUE RGNL (DBQ)

<p>VOR minimums: For inop ALS, increase S-31 Cats C and D visibility to 2 SM. ZUKOB fix minimums: For inop ALS, increase S-31 Cats C and D visibility to 1 1/2 SM.</p>	<p>MALSR</p>	<p>MISSED APPROACH: Climbing right turn to 3500 on DBQ VORTAC R-322 to CASSY INT/ 25 DME and hold.</p>

ATIS 127.25	CHICAGO CENTER 133.95 281.4	DUBUQUE TOWER * 119.5 (CTAF) 0 254.4	GND CON 121.8	UNICOM 122.95
-----------------------	---------------------------------------	--	-------------------------	-------------------------



ELEV 1077	D	TDZE 1062
-----------	----------	-----------



CATEGORY	A	B	C	D
S-31	1820-1/2 758 (800-1/2)	1820-3/4 758 (800-3/4)	1820-1 3/4	758 (800-1 3/4)
CIRCLING	1820-1 743 (800-1)	1820-1 1/4 743 (800-1 1/4)	1820-2 1/4 743 (800-2 1/4)	1820-2 1/2 743 (800-2 1/2)
ZUKOB FIX MINIMUMS				
S-31	1540-1/2	478 (500-1/2)	1540-1	478 (500-1)
CIRCLING	1580-1 503 (600-1)	1600-1 523 (600-1)	1600-1 1/2 523 (600-1 1/2)	1800-2 723 (800-2)

NC-3, 22 JAN 2026 to 19 FEB 2026

NC-3, 22 JAN 2026 to 19 FEB 2026