


LOC I-MWH <b>109.5</b>	APP CRS <b>324°</b>	Rwy Ldg <b>13492</b> TDZE <b>1167</b> Apt Elev <b>1189</b>
---------------------------	------------------------	--

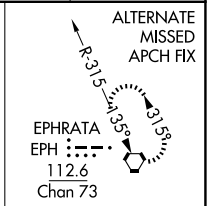
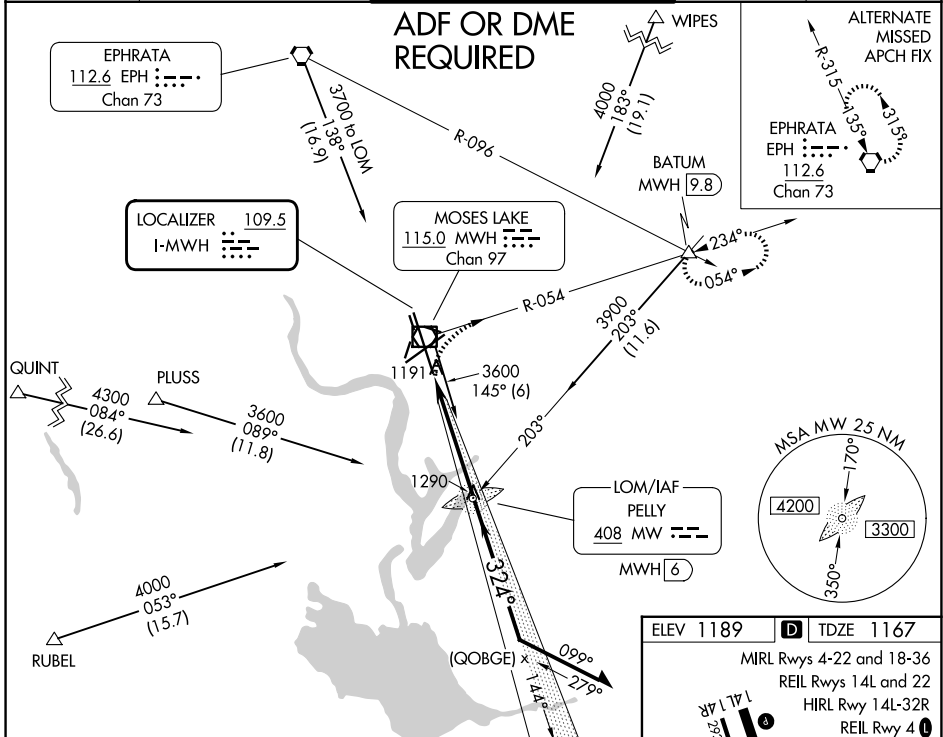
# ILS or LOC RWY 32R

GRANT COUNTY INTL (MWH)

**⚠** When local altimeter setting not received, use Ephrata altimeter setting; increase all DA/MDA 40 feet and Circling Cat D visibility  $\frac{1}{2}$  SM. For inop MALSR, increase S-LOC 32R Cat D visibility to RVR 5000. \*RVR 1800 authorized with use of FD or AP or HUD to DA, NA when using Ephrata altimeter setting.

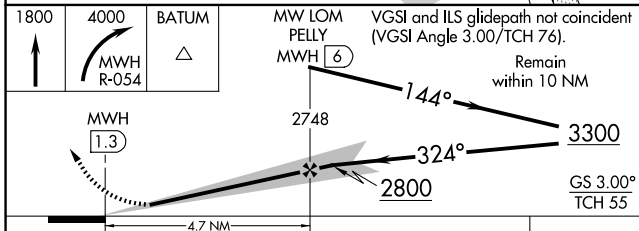
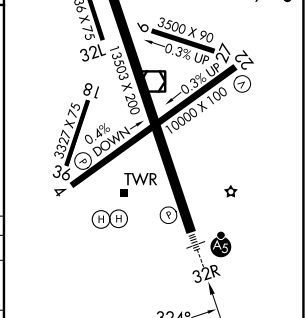
**MALSR**  
 MISSED APPROACH: Climb to 1800, then climbing right turn to 4000 on MWH R-054 to BATUM INT/MWH 9.8 DME and hold, continue climb-in-hold to 4000.

ATIS <b>119.05</b>	GRANT COUNTY APP CON * <b>126.4 379.95</b>	GRANT COUNTY TOWER * <b>118.25 (CTAF) 257.8 (E)</b> <b>128.0 257.8 (W)</b>	GND CON <b>121.9</b>	UNICOM <b>122.95</b>
-----------------------	---	--	-------------------------	-------------------------



ELEV 1189 **D** TDZE 1167

MIRL Rwy 4-22 and 18-36  
 REIL Rwy 14L and 22  
 HIRL Rwy 14L-32R  
 REIL Rwy 4



CATEGORY	A	B	C	D
S-ILS 32R*	1367/24		200 (200-1/2)	
S-LOC 32R	1440/24	273 (300-1/2)	1440/40	273 (300-3/4)
CIRCLING	1680-1	491 (500-1)	1680-1 1/2	1820-2
			491 (500-1 1/2)	631 (700-2)

FAF to MAP 4.7 NM					
Knots	60	90	120	150	180
Min:Sec	4:42	3:08	2:21	1:53	1:34