


WAAS CH 56430 W06A	APP CRS 058°	Rwy Ldg TDZE Apt Elev	6006 186 213
--	------------------------	-----------------------------	---

RNAV (GPS) Z RWY 6

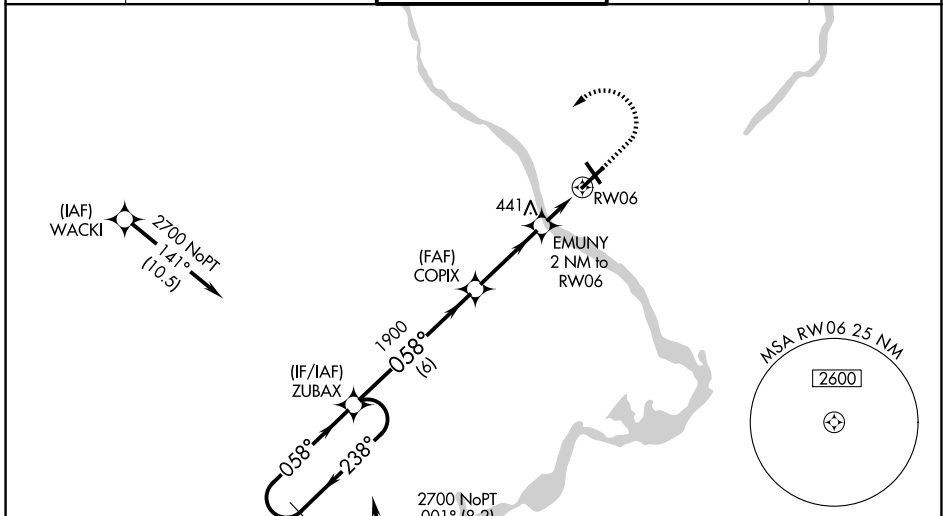
TRENTON MERCER (TTN)

RNP APCH - GPS.

⚠ Baro-VNAV and VDP NA when using Northeast Philadelphia altimeter setting. For uncompensated Baro-VNAV systems, LNAV/VNAV NA below -13°C or above 54°C. When local altimeter setting not received, use Northeast Philadelphia altimeter setting and increase LPV DA to 437 feet; increase LNAV/VNAV DA to 658 feet and all visibilities ¼ SM; increase all MDAs 60 feet and LNAV visibility Cat C/D ¼ SM, and Circling visibility Cat C ¼ SM. For inop ALS, increase LNAV visibility Cats C/D to 1 ¾. For inop ALS when using Northeast Philadelphia altimeter setting, increase LNAV/VNAV all Cats visibility to 1 ¾ and LNAV visibility Cats C/D to 1 ¾. When Circling to Rwy 34 at night, operational VGSI required, remain on or above VGSI glidepath until threshold.

MALSR
 MISSED APPROACH: Climb to 1500 then climbing left turn to 2700 direct ZUBAX and hold.

ATIS 126.775	PHILADELPHIA APP CON 123.8 291.7	TRENTON TOWER ★ 120.7 (CTAF) 0 257.8	GND CON 121.9 257.8	UNICOM 122.95
------------------------	--	--	-------------------------------	-------------------------



NE-2, 22 JAN 2026 to 19 FEB 2026

NE-2, 22 JAN 2026 to 19 FEB 2026

ELEV 213	D	TDZE 186
----------	----------	----------

4 NM Holding Pattern

ZUBAX

2700 ← 238° / 058° →

GP 3.00° TCH 60

COPIX 1900

EMUNY 2 NM to RWY 06

*840

*1.5 NM to RWY 06

*LNAV only.

6 NM | 3.3 NM | 0.5 | 1.5 NM

CATEGORY	A	B	C	D
LPV DA		390-1/2	204 (200-1/2)	
LNAV/VNAV DA		611-3/4	425 (400-3/4)	
LNAV MDA	700-1/2	514 (500-1/2)	700-1	514 (500-1)
CIRCLING	700-1	487 (500-1)	760-1 1/2 547 (600-1 1/2)	960-2 1/2 747 (800-2 1/2)

HIRL Rwy 6-24 and 16-34 **1**
REIL Rwy 16, 24 and 34 **1**