

FAIRBANKS, ALASKA

# RNAV (GPS) RWY 32

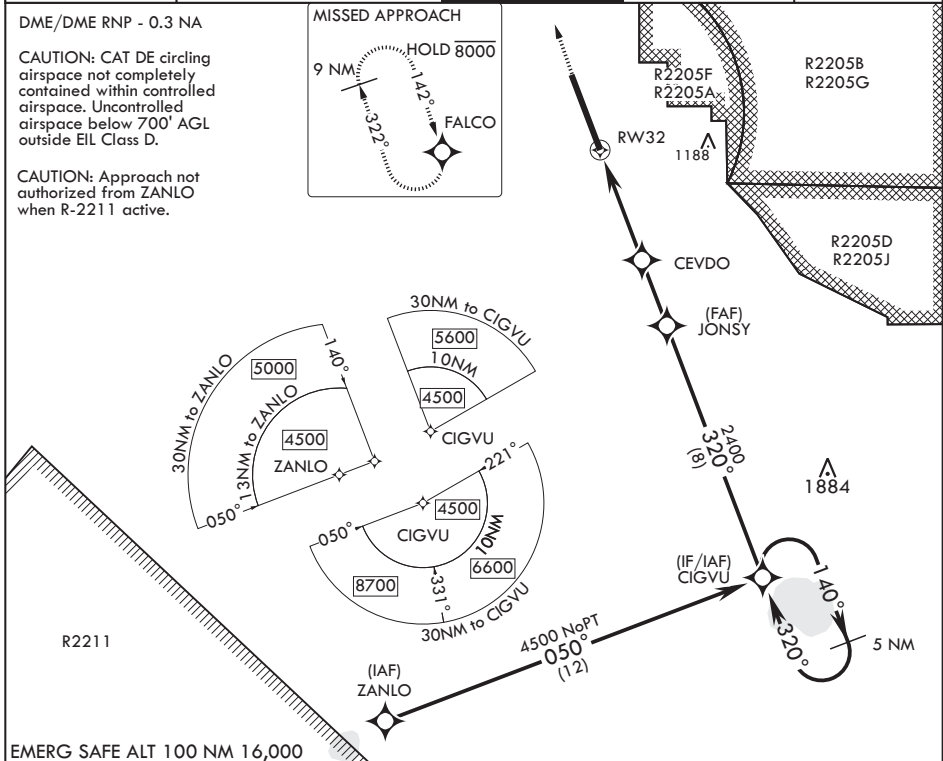
APCH CRS <b>320°</b>	Rwy Idg TDZE Arprt Elev	<b>14,529</b> <b>548</b> <b>548</b>
-------------------------	-------------------------------	---

(USAF)

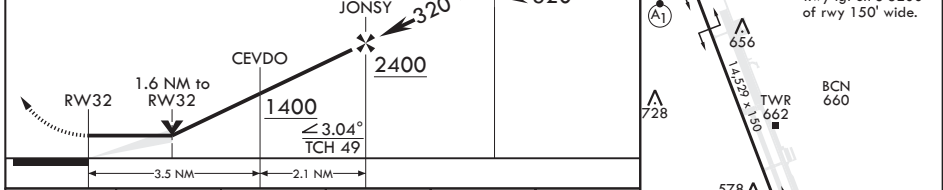
EIELSON AFB (PAEI)

RADAR required	ALSIF-1	MISSED APPROACH: Climb to 1100, then climbing right turn to 6000 direct FALCO and hold, continue climb-in-hold to 6000.
<p><b>▼</b> * When ALS inop increase CAT AB RVR to 55, vis to 1 mile; CAT CDE vis to 1 3/8 miles. ** Circling not authorized E Rwy 14-32.</p>		

ATIS* <b>119.9 273.5</b>	FAIRBANKS APP CON <b>125.35 363.2 180°-359°</b> <b>127.1 251.1 360°-179°</b>	TOWER* <b>127.2 352.05</b>	GND CON <b>121.8 275.8</b>	CLNC DEL <b>343.7</b>
-----------------------------	--	-------------------------------	-------------------------------	--------------------------



1100	6000	FALCO	VGSI and descent angles not coincident (VGSI angle 2.70/TCH 44).	CIGVU	ELEV 548	TDZE 548
------	------	-------	--	-------	----------	----------



CATEGORY	A	B	C	D	E
LNAV MDA*	1040/24 492 (500-½)		1040/50 492 (500-1)		
CIRCLING**	1040-1 492 (500-1)		1040-1½ 492 (500-1½)	1280-2¼ 732 (800-2¼)	1280-2½ 732 (800-2½)

FAIRBANKS, ALASKA 64°40'N - 147°06'W EIELSON AFB (PAEI)

Amdt 5 17JUN21

# RNAV (GPS) RWY 32

AK, 22 JAN 2026 to 19 MAR 2026

AK, 22 JAN 2026 to 19 MAR 2026