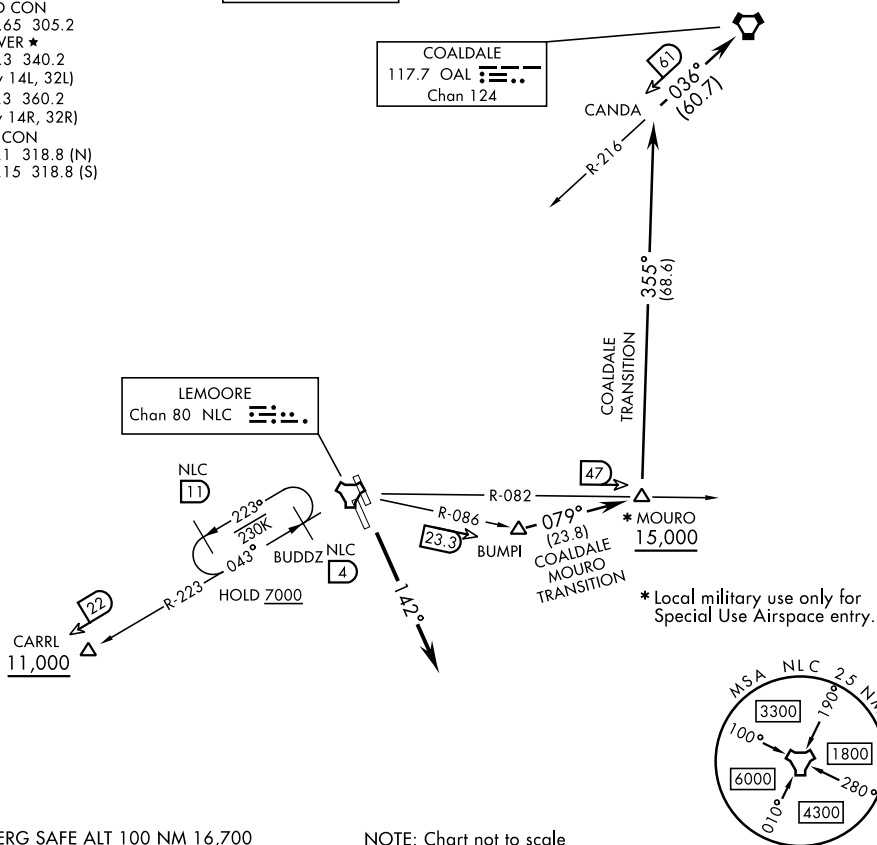


ATIS ★ 121.575 327.15
 CLNC DEL
 124.1 371.9
 GND CON
 121.65 305.2
 TOWER ★
 128.3 340.2
 (Rwy 14L, 32L)
 128.3 360.2
 (Rwy 14R, 32R)
 DEP CON
 124.1 318.8 (N)
 118.15 318.8 (S)

TOP ALTITUDE:
Assigned by ATC



EMERG SAFE ALT 100 NM 16,700

NOTE: Chart not to scale

DEPARTURE ROUTE DESCRIPTION

TAKEOFF RUNWAY 14L/14R: Climb to 2000 via hdg 142° then radar vectors to join assigned transition or route.

CARRL TRANSITION (REVES5.CARRL): From CARRL thence as filed. Cross CARRL at or above 11,000.

COALDALE TRANSITION (REVES5.OAL): From BUMPI direct MOURO, direct CANDA, direct COALDALE VORTAC. Cross MOURO at or above 15,000.

MOURO TRANSITION (REVES5.MOURO): From BUMPI direct MOURO then as filed.

LOST COMMUNICATIONS: If no transmissions are received within 8 DME of NLC TACAN, fly departure heading to intercept NLC 10 DME arc, arc to respective departure radial then via departure radial to assigned departure fix. Then via assigned route. Once established on departure radial climb to filed altitude.

REEVES-FIVE DEPARTURE (REVES5.NLC)

Orig 12JUN25

LEMOORE, CALIFORNIA

LEMOORE NAS (REEVES FIELD) (KNLC)