

VORTAC HYS <b>110.4</b> Chan 41	APP CRS <b>170°</b>	Rwy Ldg TDZE Apt Elev	<b>6501</b> <b>1999</b> <b>1999</b>
---------------------------------------	------------------------	-----------------------------	---

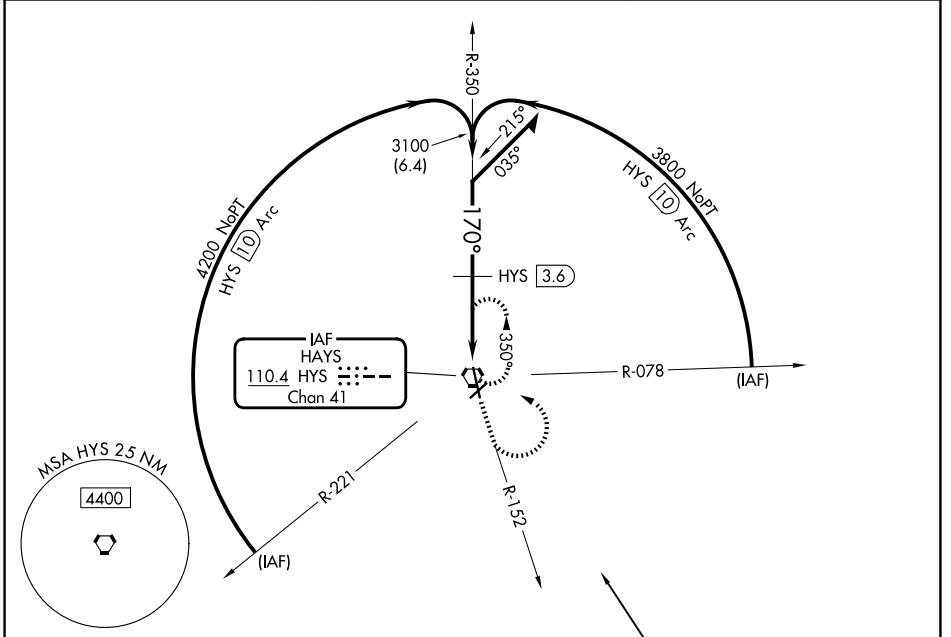
# VOR/DME RWY 16

HAYS RGNL (HYS)

**⚠** When local altimeter setting not received, use Russell altimeter setting: increase all MDA 80 feet and visibility Circling Cat C and D ¼ SM. Circling NA for Cat D northwest of Rwy 4 and west of Rwy 16. Visibility reduction by helicopters NA.

**MISSED APPROACH:** Climb to 3800 via HYS R-152 then climbing left turn to 3900 direct HYS VORTAC and hold.

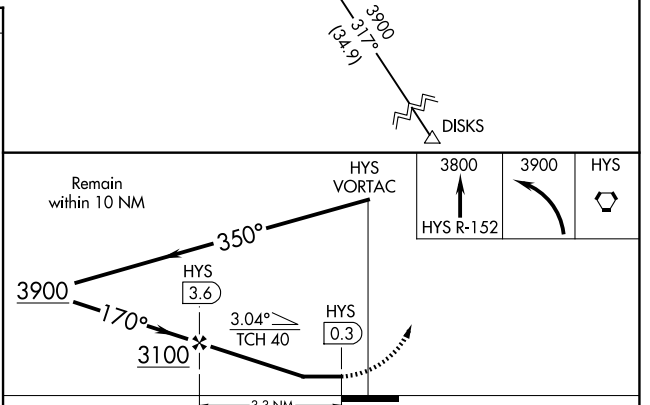
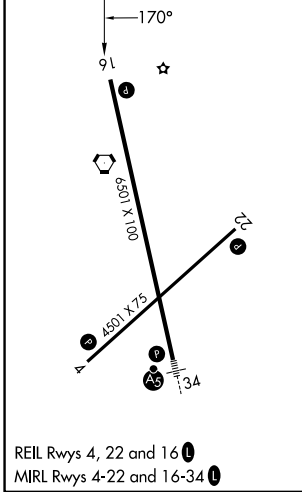
AWOS-3PT <b>125.525</b>	KANSAS CITY CENTER <b>124.4 322.4</b>	UNICOM <b>122.8 (CTAF) 0</b>
----------------------------	--	---------------------------------



NC-2, 22 JAN 2026 to 19 FEB 2026

NC-2, 22 JAN 2026 to 19 FEB 2026

ELEV 1999	<b>D</b>	TDZE 1999
-----------	----------	-----------



CATEGORY	A	B	C	D
S-16	2520-1	521 (600-1)	2520-1½ 521 (600-1½)	2520-1¾ 521 (600-1¾)
CIRCLING	2520-1	521 (600-1)	2560-1½ 561 (600-1½)	2680-2¼ 681 (700-2¼)

HAYS, KANSAS  
Amdt 3G 27JAN22

38°51'N-99°16'W

# HAYS RGNL (HYS) VOR/DME RWY 16