

ALEXANDRIA THREE DEPARTURE

SC-5, 22 JAN 2026 to 19 FEB 2026

**TOP ALTITUDE:
ASSIGNED BY ATC**

HOUSTON DEP CON
119.7 281.4
ATIS
128.375
CINC DEL
119.45
GND CON
121.8 239.0
HOOKS TOWER★
127.4 354.1 (E)
118.4 (CTAF) 354.1 (W)

LUFKIN
112.1 LFK
Chan 58

COSGO

VELCO
10000

ALEXANDRIA
116.1 AEX
Chan 108

MC COMB
116.7 MCB
Chan 114

CRESTVIEW
115.9 CEW
Chan 106

POIK
108.4 FXU
Chan 116

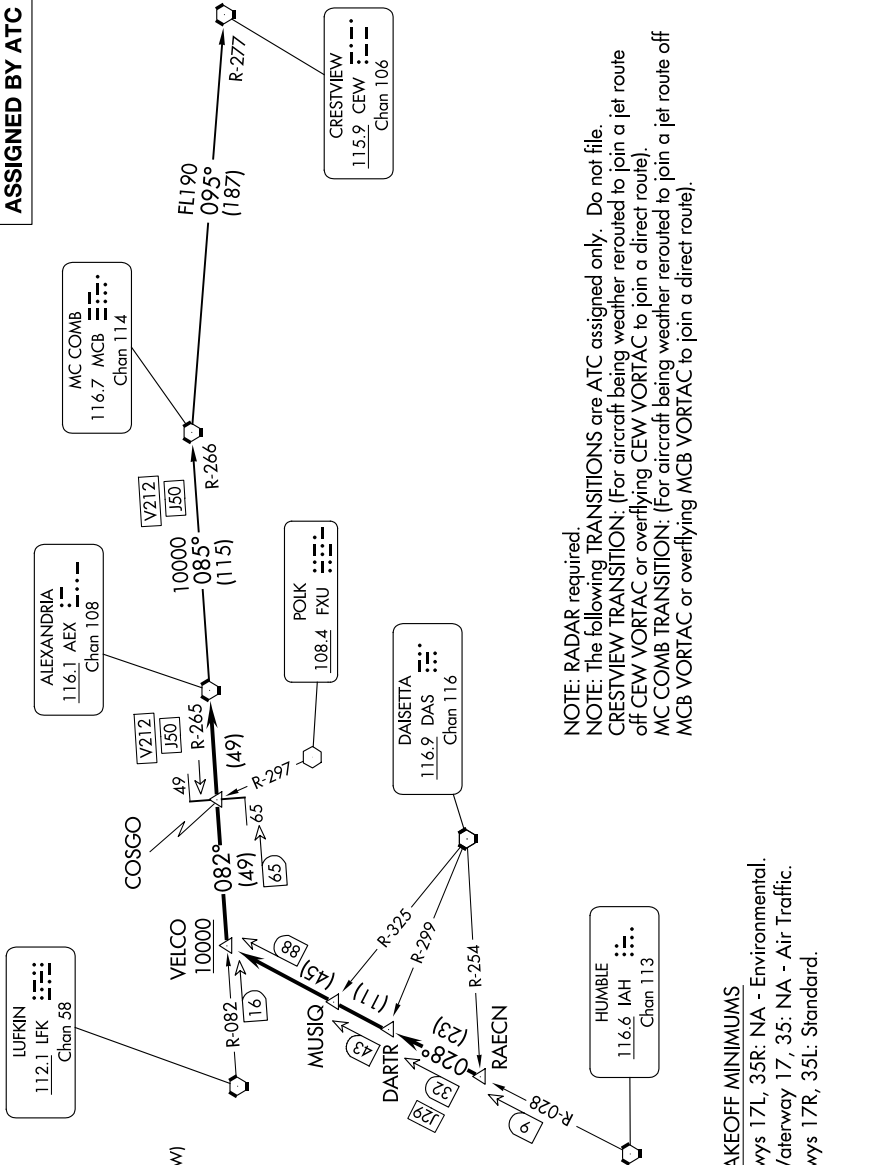
DAISETTA
116.9 DAS
Chan 116

HUMBLE
116.6 IAH
Chan 113



TAKEOFF MINIMUMS
Rwys 17L, 35R: NA - Environmental.
Waterway 17, 35: NA - Air Traffic.
Rwys 17R, 35L: Standard.

NOTE: RADAR required.
NOTE: The following TRANSITIONS are ATC assigned only. Do not file.
CRESTVIEW TRANSITION: (For aircraft being weather rerouted to join a jet route off CEW VORTAC or overflying CEW VORTAC to join a direct route).
MC COMB TRANSITION: (For aircraft being weather rerouted to join a jet route off MCB VORTAC or overflying MCB VORTAC to join a direct route).



(CONTINUED ON FOLLOWING PAGE)

SC-5, 22 JAN 2026 to 19 FEB 2026

ALEXANDRIA THREE DEPARTURE

NOTE: Chart not to scale.