

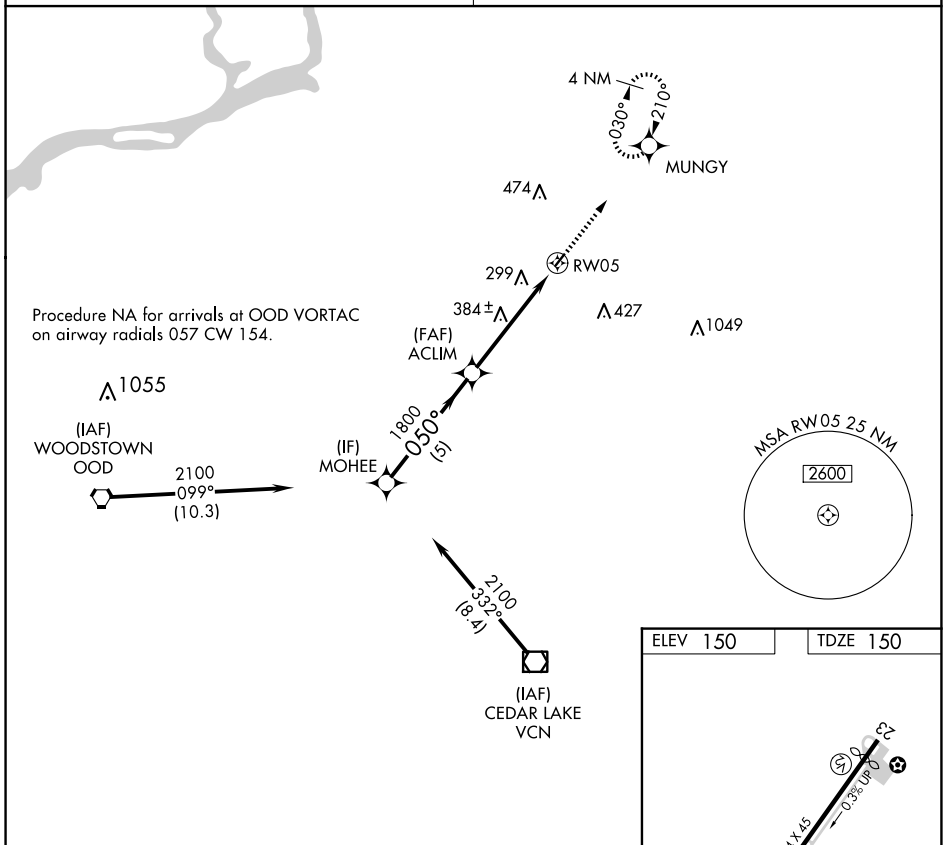
APP CRS	Rwy Idg	<b>2354</b>
<b>050°</b>	TDZE	<b>150</b>
	Apt Elev	<b>150</b>

# RNAV (GPS) RWY 5

PINE VALLEY (19N)

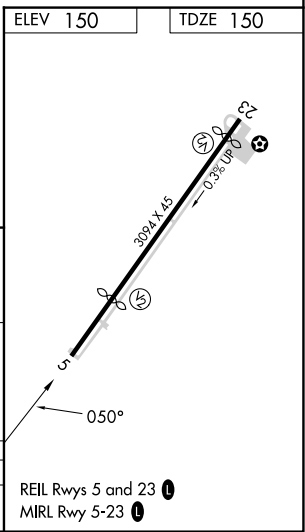
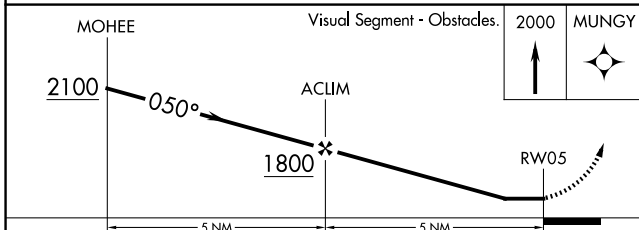
RNP APCH.	MISSED APPROACH: Climb to 2000 direct MUNGY and hold.
<p><b>▼</b> Rwy 5 helicopter visibility reduction below 1 SM NA.</p> <p><b>▲ NA</b> Procedure NA at night. Use Mount Holly altimeter setting; when not received use Philadelphia Intl altimeter setting and increase all MDA 20 feet.</p>	

MC GUIRE APP CON <b>126.475 363.8</b>	UNICOM <b>123.0 (CTAF) 1</b>
--	---------------------------------



NE-2, 22 JAN 2026 to 19 FEB 2026

NE-2, 22 JAN 2026 to 19 FEB 2026



CATEGORY	A	B	C	D
LNAV MDA	740-1	590 (600-1)	NA	